

# Wetland Delineation Report

The Connexial Center  
Old Dairy Road  
Laurens County, South Carolina

May 31, 2018

Terracon Project No. EN187136



**Prepared for:**

Thomas & Hutton  
Columbia, South Carolina

**Prepared by:**

Terracon Consultants, Inc.  
North Charleston, South Carolina

Offices Nationwide  
Employee-Owned

Established in 1965  
[terracon.com](http://terracon.com)

# Terracon

Geotechnical   ■   Environmental   ■   Construction Materials   ■   Facilities

## Wetland Delineation Report

The Connexial Center ■ Laurens County, South Carolina

May 31, 2018 ■ Terracon Project No. EN187136



### TABLE OF CONTENTS

<b>1.0</b>	<b>INTRODUCTION.....</b>	<b>2</b>
<b>2.0</b>	<b>SCOPE OF SERVICES.....</b>	<b>2</b>
<b>3.0</b>	<b>PRELIMINARY DeSKTOP ANALYSIS .....</b>	<b>2</b>
<b>3.1</b>	Topographic Map .....	3
<b>3.2</b>	Aerial Photographs.....	3
<b>3.3</b>	National Wetlands Inventory Map.....	3
<b>3.4</b>	National Hydrography Dataset.....	4
<b>3.5</b>	Soil Survey .....	4
<b>4.0</b>	<b>FIELD DELINEATION.....</b>	<b>5</b>
<b>4.1</b>	Hydric Soils Assessment .....	5
<b>4.2</b>	Wetland Hydrology Assessment.....	5
<b>4.3</b>	Plant Community Assessment.....	5
<b>4.4</b>	Classification of Wetlands .....	6
<b>4.5</b>	Surface Water and Drainage Feature Observations .....	7
<b>5.0</b>	<b>FIELD DELINEATION RESULTS .....</b>	<b>7</b>
<b>5.1</b>	Jurisdictional Wetlands.....	7
<b>5.2</b>	Other Jurisdictional Waters of the US.....	7
<b>6.0</b>	<b>REGULATORY DETERMINATIONS AND CONCLUSIONS.....</b>	<b>9</b>
<b>7.0</b>	<b>SUMMARY AND CONCLUSIONS .....</b>	<b>9</b>
<b>8.0</b>	<b>CLOSING.....</b>	<b>9</b>

### APPENDIX A – EXHIBITS

Exhibit 1: Site Location Map

Exhibit 2: USGS Topographic Map

Exhibit 3: 1999 Infrared Aerial

Exhibit 4: 2006 Infrared Aerial

Exhibit 5: Infrared Aerial / USGS NHD / USFWS NWI Map

Exhibit 6: USDA NRCS Web Soil Survey Map

Exhibit 7: 2017 Aerial View

Exhibit A: Approximate Depiction of Aquatic Resources Map

Exhibit B: A Plat Of A Wetlands Survey Of A Tract Of Land Containing 85.567 Acres

### APPENDIX B – JURISDICTIONAL DETERMINATION REQUEST PACKAGE



## **1.0 INTRODUCTION**

Terracon Consultants, Inc. (Terracon) was retained by Thomas & Hutton to conduct a wetland delineation for the Connexial Center site, hereafter referred to as the site. The approximately 85.567-acre site is located adjacent to Old Dairy Road and Friendship Church Road in Laurens County, South Carolina. The approximate center of the review area is located at 34.645896° latitude, and -82.127634° longitude. The site is identified as Laurens County Parcel 188-00-00-003. The site location is depicted in Exhibit 1 of Appendix A.

The purpose of conducting the wetland delineation was to evaluate the site for the potential presence of Waters of the United States (WoUS) including wetlands on the project site, and if so, to identify the boundaries. A wetland delineation was conducted in general accordance with the *Regional Supplement to the Corps of Engineers Wetland Delineation Manual: Eastern Mountains and Piedmont Region*. According to the United States Army Corps of Engineers (USACE) guidelines, wetlands generally have three essential characteristics: hydrophytic vegetation, hydric soils, and wetland hydrology. All three characteristics generally must be present for a location to be classified as a wetland.

## **2.0 SCOPE OF SERVICES**

Terracon conducted the following scope of work:

- Desktop review of readily available resources to assist with identifying potential WoUS areas on the site or in the immediate vicinity of the site.
- Mobilization to the site to conduct the wetland delineation.
- Prepared a Jurisdiction Determination Request (JDR) package depicting WoUS and/or non-jurisdictional features identified during the site visit.
- Submitted the JDR package to USACE and coordinated with the USACE to verify wetland locations, as requested.
- Obtain a Jurisdictional Determination (JD) letter from USACE.

## **3.0 PRELIMINARY DESKTOP ANALYSIS**

Prior to conducting the delineation, Terracon conducted a desktop review of readily available resources to assist with identifying potential WoUS areas on the site, or in the immediate vicinity of the site. These sources included the current United States Geological Survey (USGS) 7.5 Minute Topographic Map, United States Fish and Wildlife Service (USFWS) National Wetlands Inventory (NWI) Map, USGS National Hydrography Dataset (NHD) Map, United States Department of Agriculture (USDA) – Natural Resource Conservation Services (NRCS) Web Soil Survey Map, and aerial photographs. The site specific sources of data are described in some detail below.

### **3.1 Topographic Map**

The Fountain Inn Quadrangle Topographic Map of the site was reviewed to classify topography and to identify potential streams, wetlands, and water features on the site. The Fountain Inn quad topographic map depicts an unnamed stream entering the northern boundary and transecting the northeastern portion of the site (See Exhibit 2 of Appendix A).

### **3.2 Aerial Photographs**

Terracon reviewed aerial imagery to identify potential wetlands or water bodies that may be present on the site. Aerial images from various sources including ESRI and Google Earth Pro were used for this review. Additionally, 1999 and 2006 infrared aeriels obtained from the South Carolina Department of Natural Resources (SCDNR) were reviewed.

Inundation was visible on aerial imagery in the aerial photographs in various portions throughout the site. In accordance with the *Regional Supplement to the Corps of Engineers Wetland Delineation Manual: Eastern Mountains and Piedmont Region* caution must be used in evaluating wetland areas based on inundation, because surface water may be present on a non-wetland site immediately after a heavy rain or during periods of unusually high precipitation, runoff, or river stages. Potential inundated areas are depicted on the northeastern portion of the site and a small area on the central portion of the site (see Exhibit 3 and 4 of Appendix A).

### **3.3 National Wetlands Inventory Map**

The USFWS NWI map of the site was reviewed to identify potential wetland areas. The USFWS NWI maps are published by the USFWS and depict probable wetland areas based on stereoscopic analysis of high altitude aerial photographs.

It should be noted that the *Wetlands Mapping Standard*<sup>1</sup>, established by the Federal Geographic Data Committee (FGDC), lists numerous factors affecting the accuracy of wetland mapping including:

- Scale of imagery
- Mapping scale or base map scale
- Quality of imagery
- Season of imagery (leaf-off or leaf-on)
- Type of imagery or emulsion of imagery
- Environmental conditions when imagery was captured
- Difficulty of identifying particular types of wetlands
- Availability and quality of ancillary or collateral data sources

---

<sup>1</sup>[https://www.fgdc.gov/standards/projects/wetlands-mapping/2009-08%20FGDC%20Wetlands%20Mapping%20Standard\\_final.pdf](https://www.fgdc.gov/standards/projects/wetlands-mapping/2009-08%20FGDC%20Wetlands%20Mapping%20Standard_final.pdf)

## Wetland Delineation Report

The Connexial Center ■ Laurens County, South Carolina

May 31, 2018 ■ Terracon Project No. EN187136



The location of mapped waters and wetlands on the NWI map is often times approximate and not necessarily indicative of actual field conditions. The USFWS NWI map depicts a riverine wetland system that transects the northeast portion of the site (see Exhibit 5 of Appendix A).

### 3.4 National Hydrography Dataset

The NHD is used to portray surface water. The NHD represents the drainage network with features such as rivers, streams, canals, lakes, ponds, coastline, dams, and streamgages. The USGS NHD map depicts an unnamed intermittent stream transecting the northeastern portion of the site (see Exhibit 5 of Appendix A).

### 3.5 Soil Survey

Data from the USDA Soil Conservation Service, now known as the NRCS Web Soil Survey 3.2 was reviewed to identify soil types, including hydric soils for the site. As previously indicated, hydric soil is one of the three essential characteristics of a wetland according to the USACE. Soils designated as hydric indicate the soil series, or one of its components, containing characteristics that may be hydric.

The following soil types were mapped within the project area according to the Web Soil Survey Map:

#### Excerpt from the USDA-NRCS Web Soil Survey

Summary by Map Unit — Laurens County, South Carolina (SC059)				
Map unit symbol	Map unit name	Rating*	Acres in AOI	Percent of AOI
CIB	Cecil sandy loam, 2 to 6 percent slopes	0	62.8	72.9%
CIC2	Cecil sandy loam, 6 to 10 percent slopes, moderately eroded	0	13.9	16.2%
CmC2	Cecil sandy clay loam, 6 to 10 percent slopes, moderately eroded	0	1.5	1.7%
Cw	Chewacla and Worsham soils	45	3.7	4.3%
HwB	Hiwassee sandy loam, 2 to 6 percent slopes	0	0.2	0.2%
MhF	Madison and Pacolet soils, 15 to 40 percent slopes	0	4.0	4.6%

\* This rating indicates the percentage of map units that meets the criteria for hydric soils.

Based on the NRCS Web Soil Survey data approximately 4.3% of the site contains soil, which may be considered hydric. The soils with hydric ratings on the site include Chewacla and Worsham soils (Cw). The hydric soils mapped as Cw are depicted on the northeastern portion of the site (See Exhibit 6 of Appendix A).

## **4.0 FIELD DELINEATION**

Terracon personnel conducted a field delineation of the site on April 17, 2018 to identify, document and delineate WoUS areas within the site boundaries.

Characteristics of potential jurisdictional surface waters and wetland areas were assessed utilizing the criteria detailed in Sections 4.1 through 4.5 of this report. The evaluation methods generally followed the routine on-site determination method referenced in the *Regional Supplement to the Corps of Engineers Wetland Delineation Manual: Eastern Mountains and Piedmont Region* (Version 2.0), dated April 2012.

Wetlands have three essential characteristics: hydrophytic vegetation, hydric soils, and wetland hydrology. Soils, hydrology, and vegetation were evaluated within potential wetland areas to determine if wetland characteristics were present.

### **4.1 Hydric Soils Assessment**

Subsurface soils were evaluated by digging soil pits within the potential wetland areas where necessary. Soil was evaluated at a depth of 20 inches below the ground surface, and was visually compared to *Munsell Soil Color Charts*, which aided in the evaluation of hydric soil characteristics based on the texture, coloration, and other hydric soil indicators. Typical hydric soil indicators for this region include: depleted matrix, histosol, thick dark surface, sandy gleyed matrix, sandy redox, loamy gleyed matrix, redox dark surface, and redox depressions. If these or other hydric soil indicators were observed, the observation location was considered to have hydric soil. Select soil profile data was recorded on the Wetland Determination Data Forms included in the JDR Package (Appendix B).

### **4.2 Wetland Hydrology Assessment**

Visual indicators of wetland hydrology were evaluated. Examples of primary wetland hydrology indicators include, but are not limited to, surface water, high water table, soil saturation, water marks, sediment deposits, drift deposits, iron deposits, inundation visible on aerial imagery, sparsely vegetated concave surface, geomorphic position and water-stained leaves. If at least one primary or two secondary indicators were observed, the observation location was considered to have wetland hydrology. Hydrology indicators were recorded on the Wetland Determination Data Forms included in the JDR Package (Appendix B).

### **4.3 Plant Community Assessment**

Potential wetland areas were visually observed to identify plant species and estimate the percent ground cover for each vegetation stratum. Five strata of plant community types were evaluated separately, which included: trees, saplings, shrubs, herbs, and woody vines.



## Wetland Delineation Report

The Connexial Center ■ Laurens County, South Carolina

May 31, 2018 ■ Terracon Project No. EN187136



Wetland indicator status based on the National Wetland Plant List<sup>2</sup>, if established, was documented for each species identified. An indicator status reflects the probability that a particular plant species occurs in a wetland. Indicator statuses are presented below:

- **Obligate Wetland (OBL)** - almost always occurs (estimated probability greater than 99%) in wetlands.
- **Facultative Wetland (FACW)** - usually occurs in wetlands (estimated probability 67% - 99%) but occasionally found in non-wetlands.
- **Facultative (FAC)** - equally likely to occur in wetlands or non-wetlands (estimated probability 34% - 66%).
- **Facultative Upland (FACU)** - usually occurs in non-wetlands (estimated probability 67% - 99%) but occasionally found in wetlands.
- **Obligate Upland (UPL)** – rarely occurs in wetlands (estimated probability greater than 99%) in non-wetlands.

Dominant plant species were determined and documented for each stratum. The rapid test for hydrophytic vegetation was conducted. If the plant community passed the rapid test, no further investigation was performed and the plant community was considered hydric. If further analysis was warranted, the “50/20 rule” was applied by summing the number of dominant species with an indicator status of OBL, FACW, or FAC divided by the total number of dominant species across the strata. If more than 50% of the dominant species were assigned an indicator status of OBL, FACW, or FAC, hydrophytic vegetation was considered present. If the percentage of dominant species with an indicator status of OBL, FACW, and/or FAC was less than 50 percent, the prevalence index was calculated to conclude if hydrophytic vegetation was present or absent.

## 4.4 Classification of Wetlands

Following review of wetland criteria at the potential areas, a wetland determination was made on the site. Under normal circumstances, if one or more of the wetland criteria are not identified, the area is not considered to be a wetland. If all three wetland indicators were identified, the area is classified as wetland. Soil, hydrology, and vegetation assessment data from locations in each project site were recorded on a USACE Wetland Determination Data Form – Eastern Mountains and Piedmont Region. The recorded data forms for the subject site and the data point locations can be seen in Appendix B within the Jurisdictional Determination request Package.

Upon the determination of wetland limits, Wetlands and WoUS areas were marked in the field using highly visible colored flagging, and marked by utilizing a Trimble Geo7x GPS with a GNSS receiver (sub-meter accuracy) hand-held unit to map the location and boundaries of delineated

---

<sup>2</sup> [http://wetland-plants.usace.army.mil/nwpl\\_static/mapper/mapper.html](http://wetland-plants.usace.army.mil/nwpl_static/mapper/mapper.html)

wetlands. The GPS points were used to create an Accurate Depiction of Aquatic Resources (ADAR) Map using GIS software. This depiction is included as Exhibit A of Appendix A.

Additionally the GPS points were used in the survey plat, A Plat Of A Wetlands Survey Of A Tract Of Land Containing 85.567 Acres, Near The Town Of Gray Court, Laurens County, South Carolina, prepared for Laurens County Development Corporation, prepared by Thomas and Hutton Engineering Co., dated May 21, 2018. This depiction is included as Exhibit B of Appendix A.

#### **4.5 Surface Water and Drainage Feature Observations**

Terracon also made observations of site features to identify jurisdictional WoUS. If a surface water body or drainage feature was identified, observations regarding geomorphic, hydrologic and/or biological characteristics were recorded.

### **5.0 FIELD DELINEATION RESULTS**

On April 17, 2018, Terracon performed a field delineation to identify potential wetlands and WoUS on the site as discussed in Section 4 above. Wetland Determination Data Forms included in the JDR package and ground photographs in Appendix B provide an indication of the physical characteristics observed during the site visit. Descriptions of the evaluated areas are listed in the following sections. Exhibit A and Exhibit B in Appendix A shows locations of the wetlands. Wetlands and WoUS areas were marked in the field using highly visible colored flagging and each flag was marked using a Trimble Geo7x GPS with GNSS receiver. The GPS data was saved to an electronic file for future reference and preparation of maps depicting the locations of wetlands and WoUS using ArcMap® Geographic Information System (GIS) software. Refer to the JDR package in Appendix B. The following subsections summarize the wetlands, WoUS, and non-jurisdictional features on the site.

#### **5.1 Jurisdictional Wetlands**

Jurisdictional wetlands were not observed on the site.

#### **5.2 Other Jurisdictional Waters of the US**

Field observations indicated that two jurisdictional linear features within the site exhibited criteria sufficient to be classified as a Relatively Permanent Water (RPW) Tributary. The tributaries channels are moderate to high gradient and the substrate is poorly sorted and contains high amounts of fine sediment and silt.

A summary of the jurisdictional tributaries are provided in the tables below:

## Wetland Delineation Report

The Connexial Center ■ Laurens County, South Carolina

May 31, 2018 ■ Terracon Project No. EN187136



WoUS	Jurisdictional Tributary 1
Approximate Length Onsite	~895 linear feet
Name of Water Body	Unnamed tributary to Reedy Creek
Location	Northeast portion of the site
WUS Type	Relatively permanent water
Flow Characteristics	Perennial
Ordinary High Water Mark (OHWM)	Yes
Defined Bed & Bank	Yes
Average Channel Width Across OHWM	5 to 10 feet
Average Channel Width Across Bank Top	10 to 15 feet
Average Channel Width Across Water Surface or Dry Bottom	5 to 8 feet
Water Depth	<2 feet
Stream Flow Direction	North
Average Bank Height	Left Bank: 3 feet Right Bank: 3 feet
% Slope On Banks	Left Bank: 45 to 85 percent Right Bank: 45 to 85 percent
Bank Substrate	80% Soil, 20% Organic
Bed Substrate	80% Soil, 20% Rock/Debris

WoUS	Jurisdictional Tributary 2
Approximate Length Onsite	~418 linear feet
Name of Water Body	Unnamed tributary to Reedy Creek
Location	East central portion of the site
WUS Type	Relatively permanent water
Flow Characteristics	Perennial
Ordinary High Water Mark (OHWM)	Yes
Defined Bed & Bank	Yes
Average Channel Width Across OHWM	5 to 10 feet
Average Channel Width Across Bank Top	5 to 15 feet
Average Channel Width Across Water Surface or Dry Bottom	2 to 5 feet
Water Depth	<1 feet
Stream Flow Direction	North
Average Bank Height	Left Bank: 3 feet Right Bank: 3 feet
% Slope On Banks	Left Bank: 45 to 85 percent Right Bank: 45 to 85 percent
Bank Substrate	80% Soil, 20% Organic
Bed Substrate	80% Soil, 20% Rock/Debris

### 5.3 Other Non-Jurisdictional Features

Non-jurisdictional features were not observed on the site.

## **Wetland Delineation Report**

The Connexial Center ■ Laurens County, South Carolina

May 31, 2018 ■ Terracon Project No. EN187136



## **6.0 REGULATORY DETERMINATIONS AND CONCLUSIONS**

The JDR Package was prepared following the field delineation, which is included in Appendix B. Terracon submitted the JDR package to USACE Greenville, South Carolina Regulatory Field Office via mail on May 25, 2018.

Terracon is currently coordinating with the USACE to schedule a field verification visit if requested by the USACE. The USACE will make a final determination on the field delineation depicted in Appendix A, Exhibit A and Exhibit B and issue a Jurisdictional Determination Letter following the site visit as applicable.

## **7.0 SUMMARY AND CONCLUSIONS**

Terracon performed a wetland delineation of the site on April 17, 2018. Based on the field observations and the wetland delineation the site contains the following wetlands and WoUS:

- Approximate Total Jurisdictional Tributaries: 1,313 Linear Feet

Section 404 of the Clean Water Act requires that anyone interested in depositing dredged or fill material into "waters of the United States, including wetlands," must receive authorization for such activities. The USACE has been assigned responsibility for administering the Section 404 permitting process. The final determination of whether an area is a wetland and whether the activity requires a permit, must be made by a USACE Regulatory Office. It is Terracon's opinion that the aquatic features depicted on Exhibit B in Appendix A accurately depicts the jurisdictional WoUS within the project limits.

## **8.0 CLOSING**

Terracon appreciates the opportunity to provide you with natural resources services. If you have any questions regarding the information contained in this report, please contact us.

Sincerely,

**Terracon Consultants, Inc.**

J. Ted Melchers IV  
Environmental Scientist

Andy Ruocco, PWS  
Environmental Department Manager



## **APPENDIX A**

**Exhibit 1: Site Location Map**

**Exhibit 2: USGS Topographic Map**

**Exhibit 3: 1999 Infrared Aerial**

**Exhibit 4: 2006 Infrared Aerial**

**Exhibit 5: Infrared Aerial / USGS NHD / USFWS NWI Map**

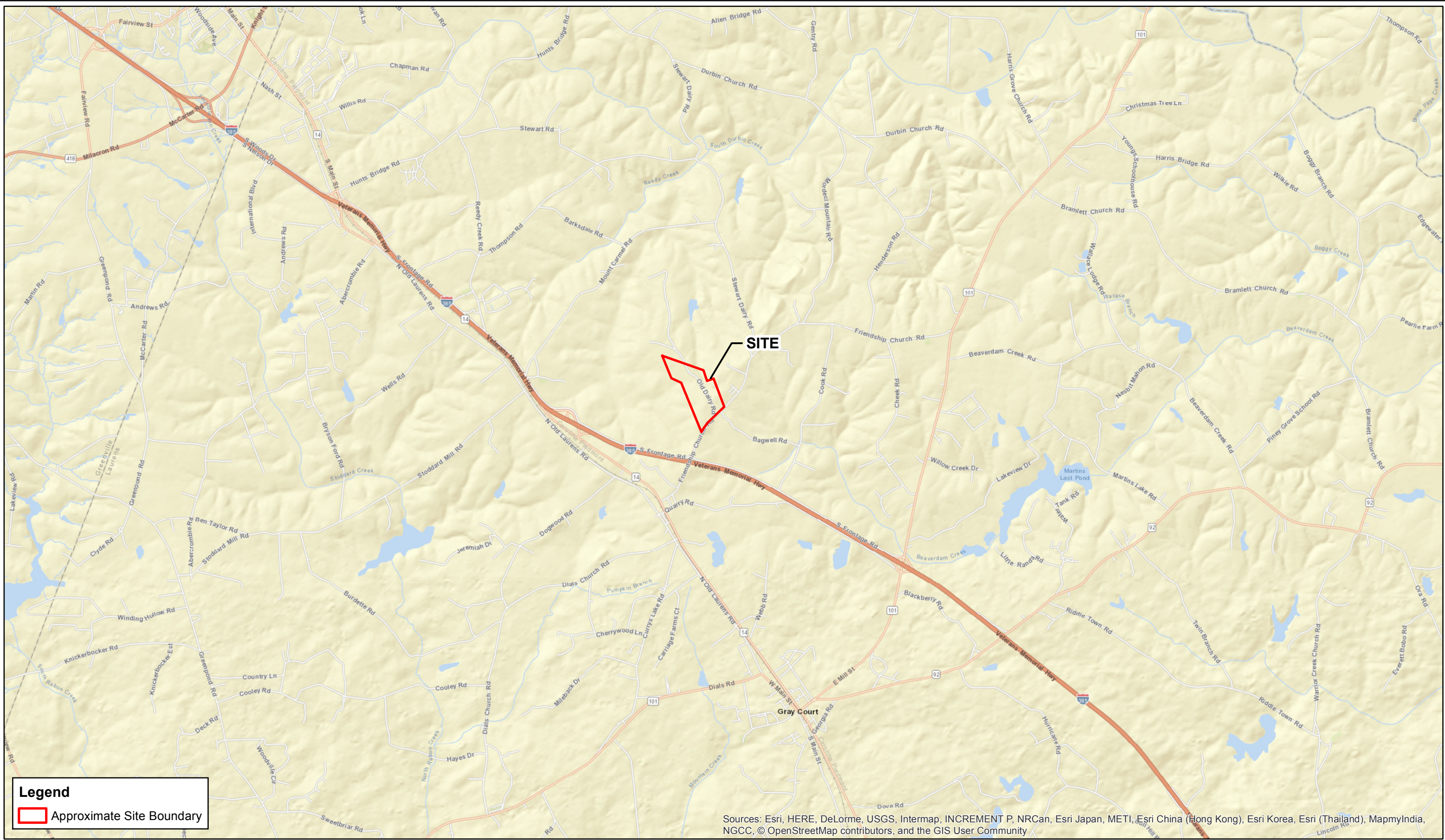
**Exhibit 6: USDA NRCS Web Soil Survey Map**

**Exhibit 7: 2017 Aerial View**

**Exhibit A: Approximate Depiction of Aquatic Resources Map**

**Exhibit B: A Plat Of A Wetlands Survey Of A Tract Of Land Containing 85.567 Acres**

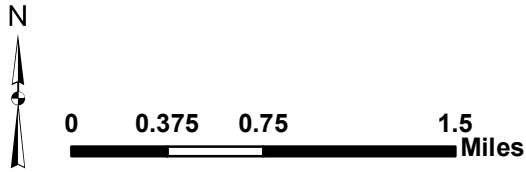




Legend

Approximate Site Boundary

Sources: Esri, HERE, DeLorme, USGS, Intermap, INCREMENT P, NRCan, Esri Japan, METI, Esri China (Hong Kong), Esri Korea, Esri (Thailand), MapmyIndia, NGCC, © OpenStreetMap contributors, and the GIS User Community



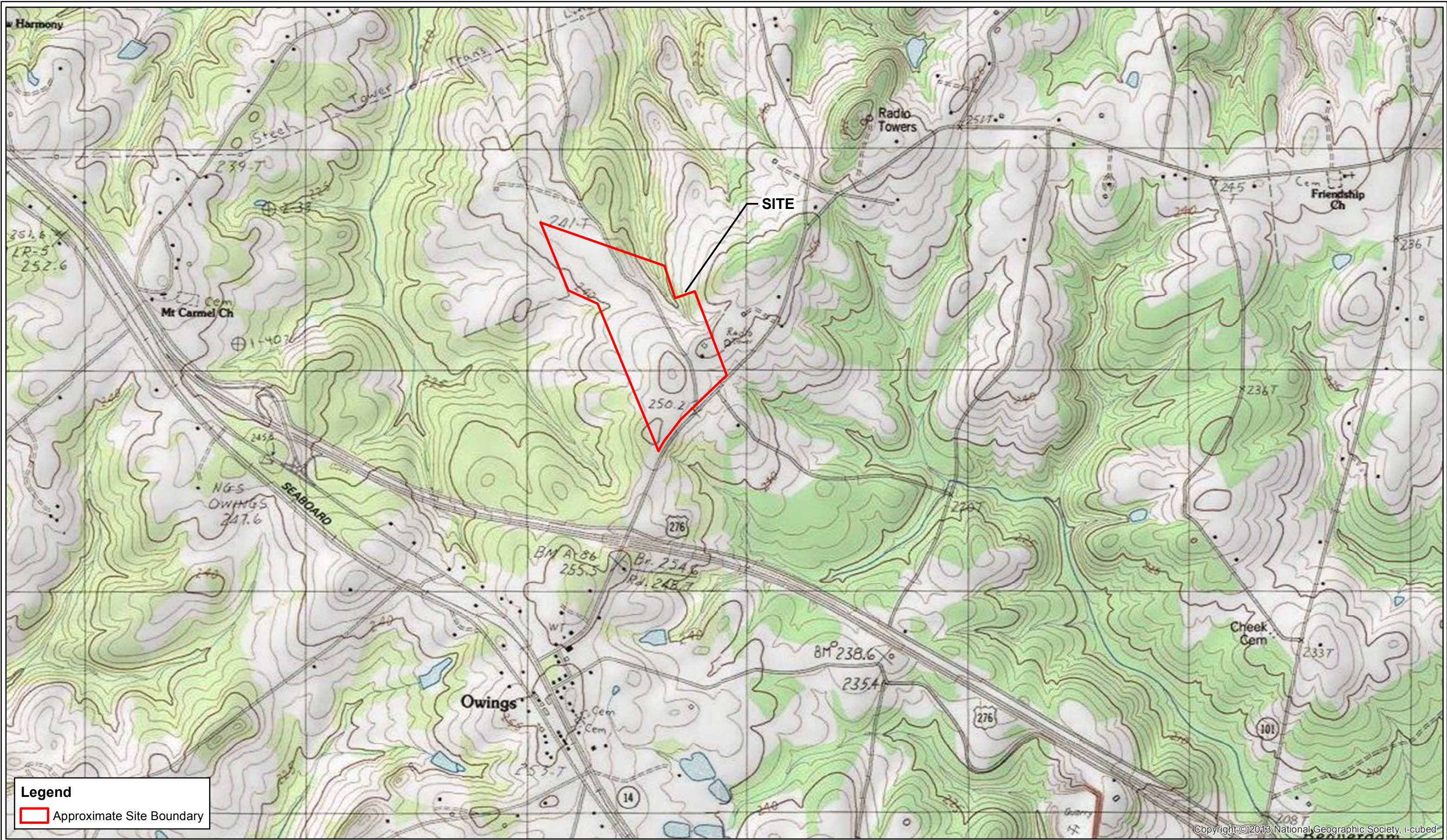
Project No.	EN187136
PM:	JTM
Drawn By:	JTM
Date:	4/16/2018

Terracon

1450 Fifth Street WestN.Charleston, SC 29405  
Phone: 843.884.1234Fax: 843.884.9234

Site Location	EXHIBIT NO.
The Connexial Center	1
Laurens County	South Carolina





Copyright © 2013 National Geographic Society, i-cubed



0 0.125 0.25 0.5 Miles

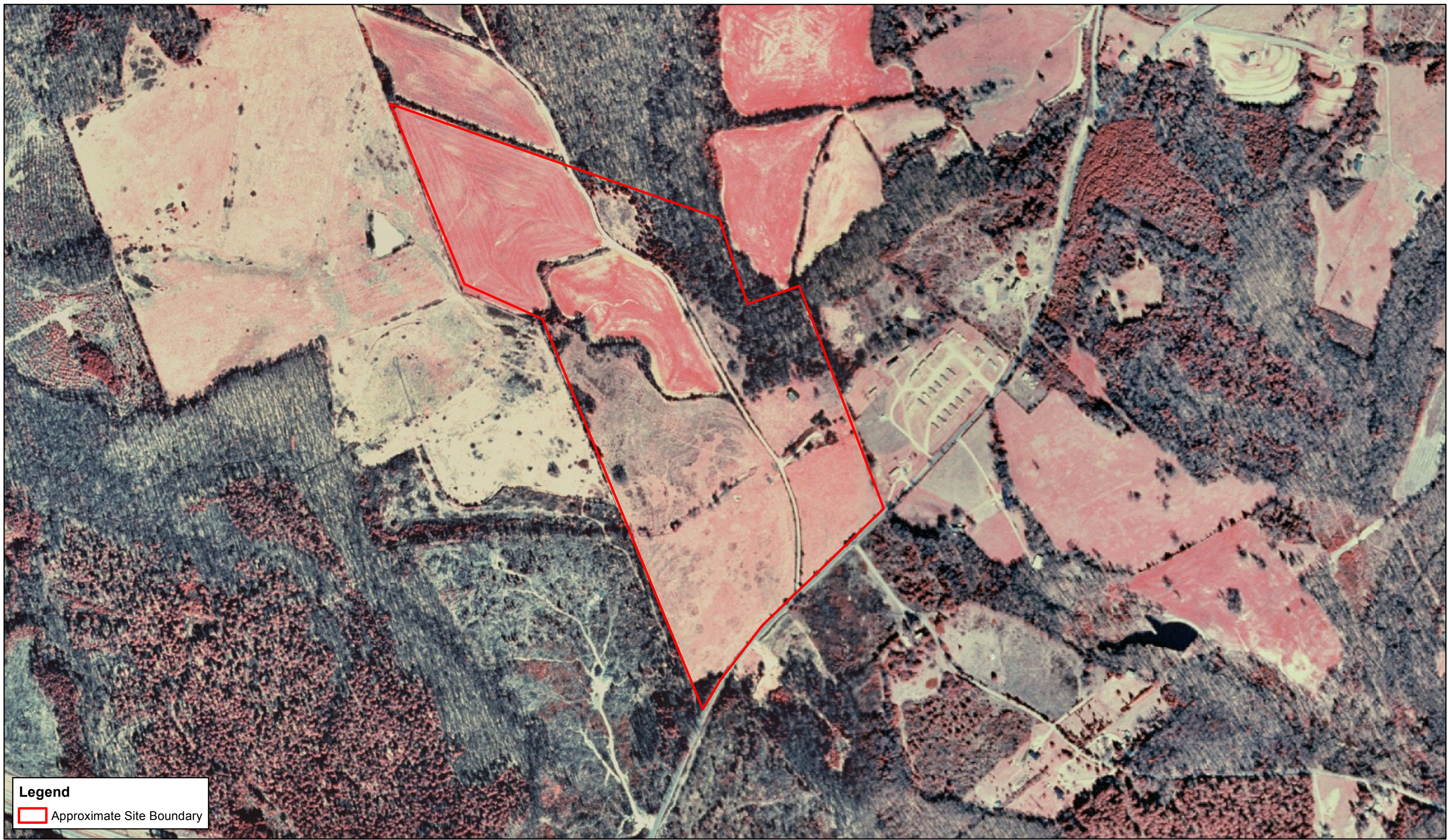
Project No.	EN187136
PM:	JTM
Drawn By:	JTM
Date:	4/16/2018

**Terracon**


1450 Fifth Street West N Charleston, SC 29405  
Phone: 843.884.1234 Fax: 843.884.9234

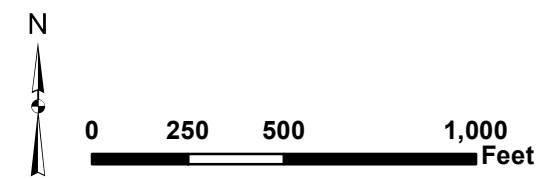
Fountain Inn, SC-USGS Topographic Map		EXHIBIT NO.
The Connexial Center		2
Laurens County	South Carolina	





**Legend**

 Approximate Site Boundary



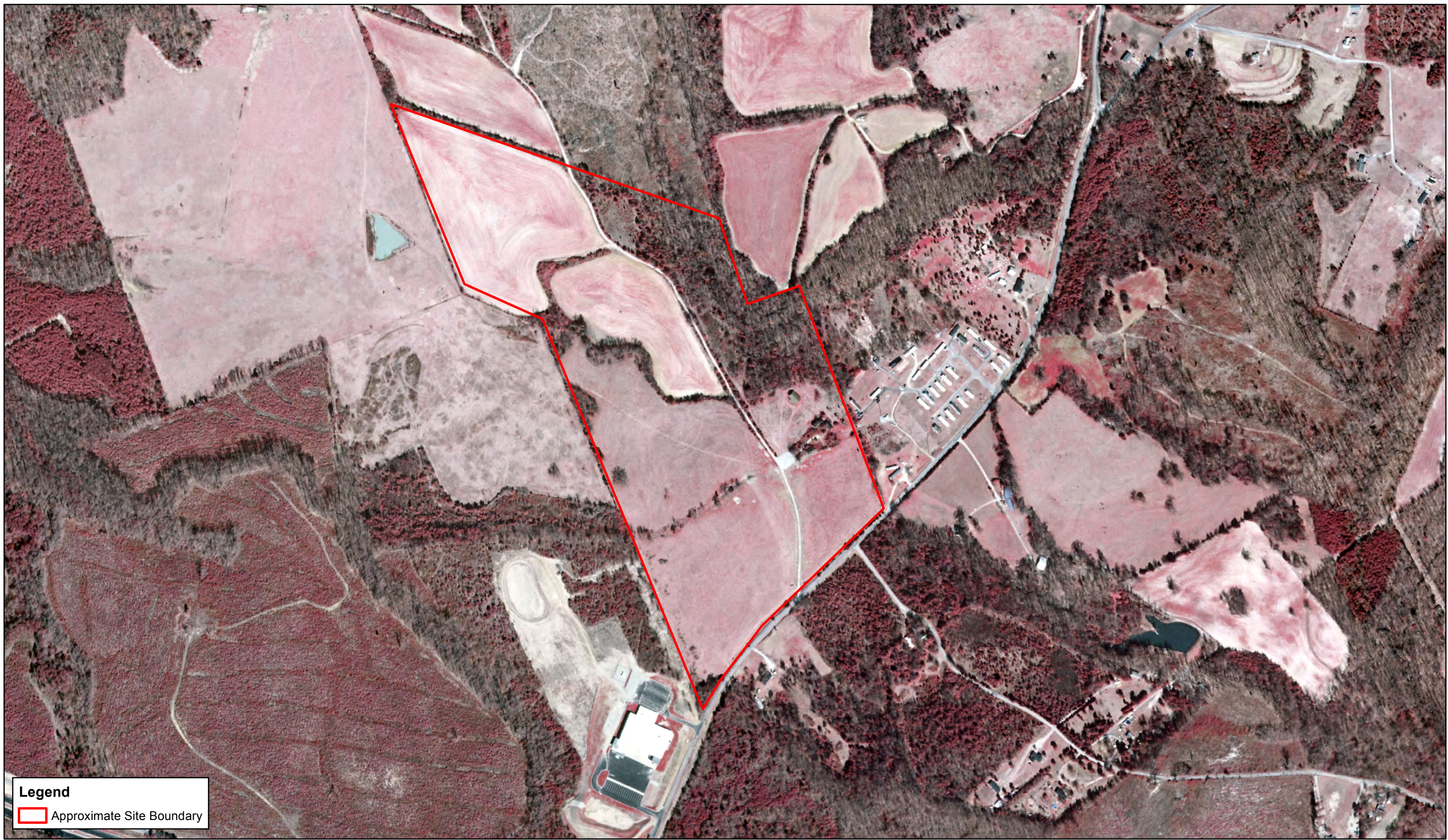
Project No.	EN187136
PM:	JTM
Drawn By:	JTM
Date:	4/16/2018

**Terracon**

1450 Fifth Street West N.Charleston, SC 29405  
Phone: 843.884.1234 Fax: 843.884.9234

1999 Infrared Aerial		EXHIBIT NO.
The Connexial Center		3
Laurens County	South Carolina	





**Legend**

Approximate Site Boundary



0 250 500 1,000 Feet

Project No.	EN187136
PM:	JTM
Drawn By:	JTM
Date:	4/16/2018

**Terracon**

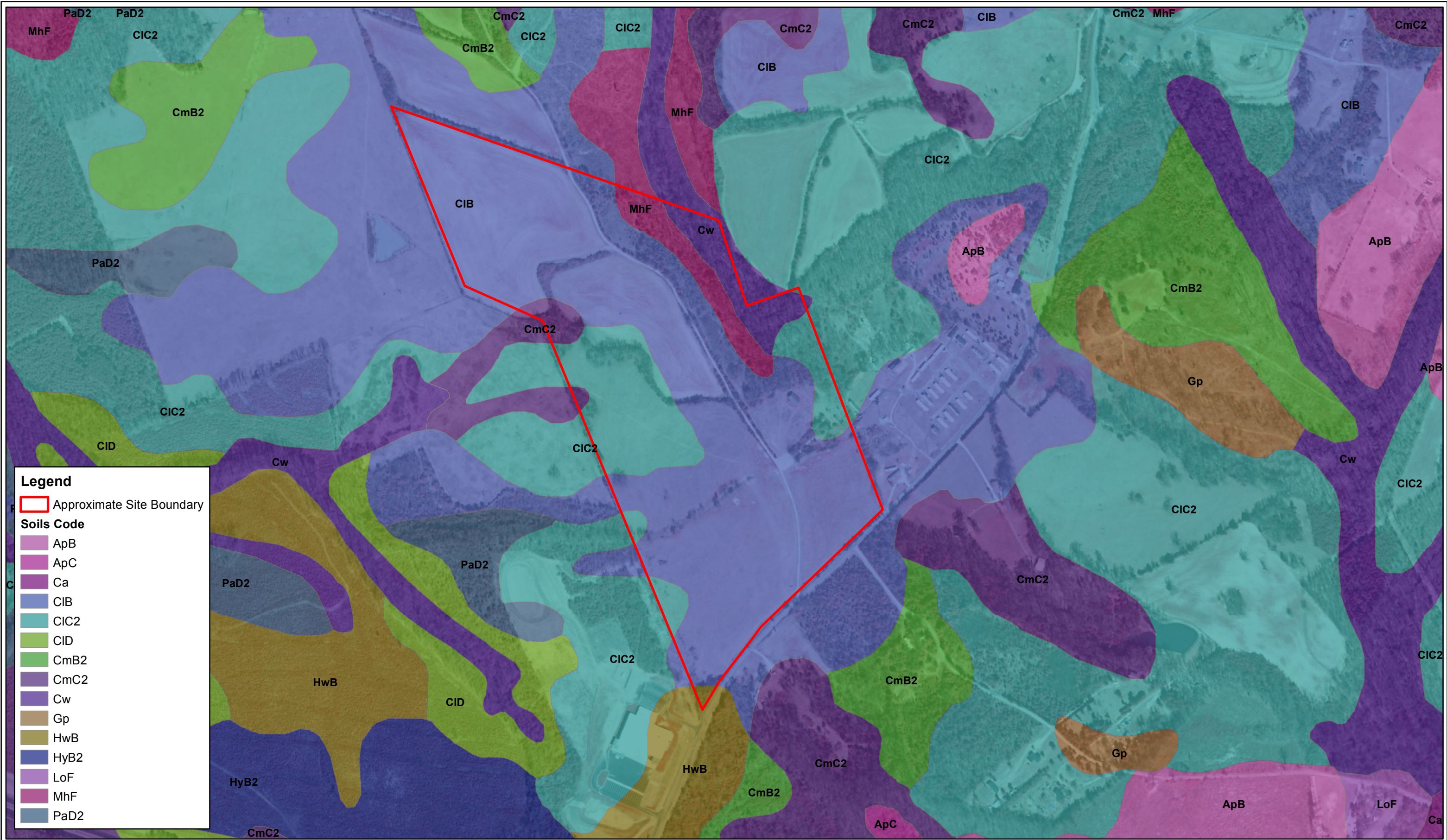
1450 Fifth Street West N Charleston, SC 29405  
Phone: 843.884.1234 Fax: 843.884.9234

2006 Infrared Aerial	EXHIBIT NO.
The Connexial Center	4
Laurens County	South Carolina









**Legend**


Approximate Site Boundary

**Soils Code**

- ApB
- ApC
- Ca
- CIB
- CIC2
- CID
- CmB2
- CmC2
- Cw
- Gp
- HwB
- HyB2
- LoF
- MhF
- PaD2

N

0 250 500 1,000 Feet

Project No. EN187136		2006 Infrared Aerial / USDA NRCS Soils Map		EXHIBIT NO.
PM: JTM		The Connexial Center		6
Drawn By: JTM				
Date: 4/16/2018		1450 Fifth Street West Phone: 843.884.1234		
		Laurens County		South Carolina





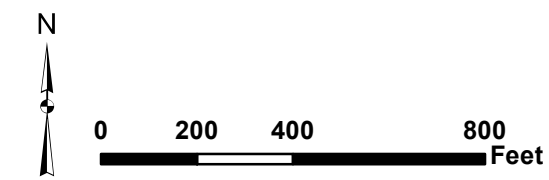


The Wetland Lines depicted on this drawing were flagged and surveyed with a Trimble Geo7x GPS with GNSS receiver in the field by Terracon Consultants on 4/17/18. Each survey point was at sub-meter accuracy.



**Legend**

- Jurisdictional Tributary
- Approximate Site Boundary
- Upland Data Point



Esri, HERE, Garmin, © OpenStreetMap contributors, Source: Esri, DigitalGlobe, GeoEye, Earthstar Geographics, CNES/Airbus DS, USDA, USGS, AeroGRID, IGN, and the GIS User Community

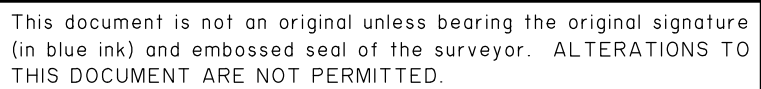
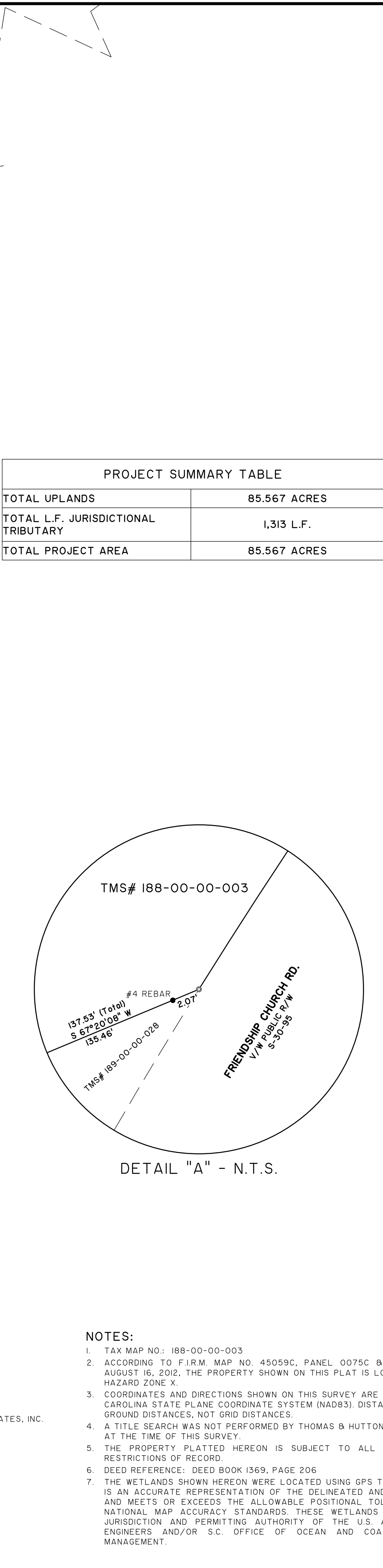
Project No.	EN187136
PM:	JTM
Drawn By:	JTM
Date:	4/23/2018

1450 Fifth Street West  
N Charleston, SC 29405  
Phone: 843.884.1234      Fax: 843.884.9234

Wetland Map
The Connexial Center
Laurens County      South Carolina

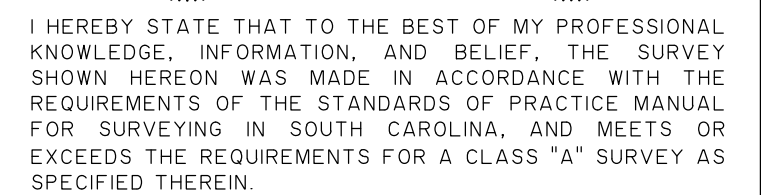
EXHIBIT NO.
A





- IRON PIPE FOUND
- IRON PIPE SET
- IRON REBAR FOUND

PROJECT SUMMARY TABLE	
TOTAL UPLANDS	85.567 ACRES
TOTAL L.F. JURISDICTIONAL TRIBUTARY	1,313 L.F.
TOTAL PROJECT AREA	85.567 ACRES



F. ELLIOTTE QUINN III  
SOUTH CAROLINA PROFESSIONAL LAND SURVEYOR  
LICENSE NO. 10292

A PLAT OF A  
WETLANDS SURVEY OF  
**A TRACT OF LAND  
CONTAINING  
85.567 Acres**

NEAR THE TOWN OF GRAY COURT  
LAURENS COUNTY, SOUTH CAROLINA

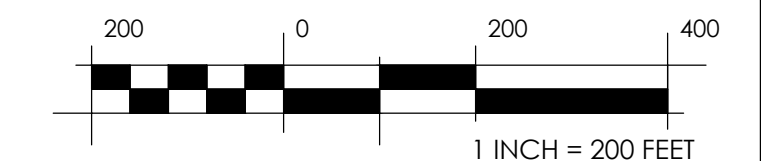
prepared for  
LAURENS COUNTY  
DEVELOPMENT CORPORATION

No.	Revision	By	Date



682 Johnnie Dodds Blvd., Suite 100  
PO Box 1522  
Mt. Pleasant, SC 29465-1522  
p 843.849.0200 f 843.849.0203

www.thomasandhutton.com



plat	drawn	reviewed	field	crew
05/21/18	fre/ppg	feq	05/18/18	nh

- REFERENCES:

1. PLAT BY S. CLAY RYKARD  
DATED OCTOBER 15, 2016  
PLAT BOOK A764, PAGE 006
2. PLAT BY FREELAND & ASSOCIATES, INC.  
DATED MAY 15, 2003  
PLAT BOOK A0425, PAGE 008
3. PLAT BY FREELAND, LINKS/SCALES & ASSOCIATES, INC.  
DATED SEPTEMBER 03, 1991  
PLAT BOOK A2, PAGE 83
4. PLAT BY JOE E. MITCHELL  
DATED JANUARY 08, 1976  
PLAT BOOK 33, PAGE 271
5. PLAT BY B.R.TODD  
DATED SEPTEMBER 16, 1915  
PLAT BOOK 23, PAGE 10
6. PLAT BY S.G. ANDERSON  
DATED MARCH 1923  
PLAT BOOK 2, PAGE 84

NOTES:

1. TAX MAP NO: 188-00-00-003
2. ACCORDING TO F.I.R.M. MAP NO. 45059C, PANEL 0075C & 0100C, REVISED AUGUST 16, 2012, THE PROPERTY SHOWN ON THIS PLAT IS LOCATED IN FLOOD HAZARD ZONE X.
3. COORDINATES AND DIRECTIONS SHOWN ON THIS SURVEY ARE BASED ON SOUTH CAROLINA STATE PLANE COORDINATE SYSTEM (NAD83). DISTANCES SHOWN ARE GROUND DISTANCES, NOT GRID DISTANCES.
4. A TITLE SEARCH WAS NOT PERFORMED BY THOMAS & HUTTON ENGINEERING CO. AT THE TIME OF THIS SURVEY.
5. THE PROPERTY PLATTED HEREON IS SUBJECT TO ALL EASEMENTS AND RESTRICTIONS OF RECORD.
6. DEED REFERENCE, DEED BOOK 369, PAGE 206
7. THE WETLANDS SHOWN HEREON WERE LOCATED USING GPS TECHNOLOGY. THIS IS AN ACCURATE REPRESENTATION OF THE DELINEATED AND FLAGGED LINES AND MEETS OR EXCEEDS THE ALLOWABLE POSITIONAL TOLERANCE BY THE NATIONAL MAP ACCURACY STANDARDS. THESE WETLANDS ARE UNDER THE JURISDICTION AND PERMITTING AUTHORITY OF THE U.S. ARMY CORPS OF ENGINEERS AND/OR S.C. OFFICE OF OCEAN AND COASTAL RESOURCE MANAGEMENT.

**APPENDIX B**  
**JURISDICTIONAL DETERMINATION REQUEST**  
**PACKAGE**

May 25, 2018



Adrianna Krzywicka  
US Army Corps of Engineers Regulatory Division  
150 Executive Center Drive, Suite 205  
Mailbox 83  
Greenville, South Carolina 29615

**Re: Request for Approved Jurisdictional Determination  
The Connexial Center  
Old Dairy Road  
Gray Court, Laurens County, South Carolina  
Terracon Project EN187136**

Dear Ms. Krzywicka:

On behalf of our client, Thomas and Hutton, Terracon Consultants, Inc. is requesting a wetland location review of the 85.567 acre site located adjacent to Old Dairy Road and Friendship Church Road in Gray Court, Laurens County, South Carolina. The approximate center of the review area is located at 34.645896°, -82.127634°. Please review the following attached information to determine the accuracy of our wetland delineation:

- |  |                               |
|--|-------------------------------|
| ■ Jurisdictional Determination Request           | ■ Infrared Aerial Photographs |
| ■ Accurate Depiction of Aquatic Resources Map    | ■ USFWS NWI Map               |
| ■ Approximate Depiction of Aquatic Resources Map | ■ USDA NRCS Soils Map         |
| ■ Site Location Map                              | ■ Photo Log Legend            |
| ■ USGS Topographic Map                           | ■ Photographs                 |
|  | ■ USACE Data Forms            |

Please refer to A Plat Of A Wetlands Survey Of A Tract Of Land Containing 85.567 Acres, Near The Town Of Gray Court, Laurens County, South Carolina, prepared for Laurens County Development Corporation, prepared by Thomas and Hutton Engineering Co., dated May 21, 2018 for accurate depiction of aquatic resources map.

If you have any questions regarding the attached information, please contact me at 843-884-1234, 843-277-8387 or [ted.melchers@terracon.com](mailto:ted.melchers@terracon.com).

Respectfully submitted,  
**Terracon Consultants Inc.,**

J. Ted Melchers IV  
Environmental Scientist

Andy Ruocco, PWS  
Environmental Manager



Terracon Consultants, Inc. 1450 Fifth Street West North Charleston, SC 29405  
P [843] 884 1234 F [843] 884 9234 [terracon.com](http://terracon.com)

**Geotechnical**



**Environmental**



**Construction Materials**



**Facilities**

U.S. Army Corps of Engineers – Charleston District - Regulatory Division  
**REQUEST FOR CORPS JURISDICTIONAL DETERMINATION (JD) / DELINEATION**  
(For Jurisdictional Status and Identifying Wetlands and Other Aquatic Resources)

**I. PROPERTY AND AGENT INFORMATION**

**A. Site Details/Location:**

Site Name: The Connexial Center Date: 5/1/2018  
City/Township/Parish: Gray Court County: Laurens  
Latitude/Longitude: 34.645896° / -82.127634° Acreage: 85.567  
Tax Map Sequence (TMS) #(s): 188-00-00-003 and 188-00-00-003  
Property Address(es): Intersection of Old Dairy Road and Friendship Church Road  
☒ Please attach a survey/plat map and vicinity map identifying location and review area for the JD/delineation.  
An accurate depiction of the review area must be provided (survey, tax map, or GPS coordinates). Tax maps may only be used if the site includes the entire tax map parcel.

**B. Requestor of Jurisdictional Determination/Delineation (if there are multiple property owners, please attach additional pages)**

Name: Deborah G. Alphin  
Company Name (if applicable): \_\_\_\_\_  
Address: 502 Shadowood Ct., SIMPSONVILLE, SC 29681  
Phone: 864-430-1774 Email: Debalphin@aol.com  
Check one: ☒ I currently own this property  
☐ I plan to purchase this property  
☐ Other, please explain \_\_\_\_\_

**C. Agent/Environmental Consultant Acting on Behalf of the Requestor (if applicable):**

Consultant/Agent Name: Ted Melchers  
Company Name: Terracon Consultants  
Address: 1450 Fifth Street West Phone: 843-884-1234  
Email: ted.melchers@terracon.com

**II. REASON FOR REQUEST (check all that apply)**

- ☐ I intend to construct/develop a project or perform activities on this site which would be designed to avoid all aquatic resources.
- ☐ I intend to construct/develop a project or perform activities on this site which would be designed to avoid all jurisdictional aquatic resources under Corps authority.
- ☒ I intend to construct/develop a project or perform activities on this site which may require authorization from the Corps, and the Jurisdictional Determination would be used to avoid and minimize impacts to jurisdictional aquatic resources and as an initial step in a future permitting process.
- ☐ I intend to construct/develop a project or perform activities on this site which may require authorization from the Corps; this request is accompanied by my permit application and the jurisdictional determination is to be used in the permitting process.
- ☐ I intend to construct/develop a project or perform activities in a navigable water of the U.S. which is subject to the ebb and flow of the tide.
- ☐ A Corps jurisdictional determination is required in order to obtain my local/state authorization.
- ☐ I intend to contest jurisdiction over a particular aquatic resource and the request the Corps to confirm that jurisdiction does/does not exist over the aquatic resource on the parcel.
- ☐ I believe that the site may be comprised entirely of dry land.
- ☐ Other: \_\_\_\_\_

\*Authorities: Rivers and Harbors Act, Section 10, 33 USC 403; Clean Water Act, Section 404, 33 USC 1344; Marine Protection, Research, and Sanctuaries Act, Section 103, 33 USC 1413; Regulatory Program of the U.S. Army Corps of Engineers; Final Rule for 33 CFR Parts 320-332.

Principal Purpose: The information that you provide will be used in evaluating your request to determine whether there are any aquatic resources within the project area subject to federal jurisdiction under the regulatory authorities referenced above.

Routine Uses: This information may be shared with the Department of Justice and other federal, state, and local government agencies, and the public, and may be made available as part of a public notice as required by federal law. Your name and property location where federal jurisdiction is to be determined will be included in the approved jurisdictional determination (AJD), which will be made available to the public on the District's website and on the Headquarters USACE website.

Disclosure: Submission of requested information is voluntary; however, if information is not provided, the request for an jurisdictional determination cannot be evaluated nor can a jurisdictional determination be issued.



### III. TYPE OF REQUEST:

- ☒ **Approved<sup>1</sup> Jurisdictional Determination (AJD) Only**
- ☐ **Preliminary<sup>2</sup> Jurisdictional Determination (PJD) Only**
- ☐ **Approved Jurisdictional Determination (AJD) with submittal of a Pre-Construction Notification or Department of the Army permit application**
- ☐ **Preliminary Jurisdictional Determination (PJD) with submittal of a Pre-Construction Notification or Department of the Army permit application**
- ☐ **Delineation of Wetlands and/or Other Aquatic Resources Only Conducted By Agent/Environmental Consultant with submittal of a Pre-Construction Notification or Department of the Army permit application (No jurisdictional determination requested)**
- ☐ I request that the **Corps delineate** the wetlands and/or other aquatic resources that may be present on my property with the attached **Pre-Construction Notification or Department of the Army permit application**
- ☐ I request that the **Corps delineate** the wetlands and/or other aquatic resources that may be present on my property **with an AJD or PJD**
- ☐ **"No Permit Required" (NPR) Letter** as I believe my proposed activity is not regulated<sup>3</sup>
- ☐ **Unclear** as to which jurisdictional determination I would like to request and require additional information to inform my decision

<sup>1</sup>**Approved** – An AJD is defined in Corps regulations at 33 CFR 331.2. As explained in further detail in RGL 16-01, an AJD is used to indicate that this office has identified the presence or absence of wetlands and/or other aquatic resources on a site, including their accurate location(s) and boundaries, as well as their jurisdictional status. AJDs are valid for 5 years.

<sup>2</sup>**Preliminary** – A PJD is defined in Corps regulations at 33 CFR 331.2. As explained in further detail in RGL 16-01, a PJD is used to indicate that this office has identified the approximate location(s) and boundaries of wetlands and/or other aquatic resources on a site that are presumed to be subject to regulatory jurisdiction of the Corps of Engineers. Unlike an AJD, a PJD does not represent a definitive, official determination that there are, or that there are not, jurisdictional aquatic resources on a site, and does not have an expiration date.

<sup>3</sup>**"No Permit Required" (NPR) Letter**– A NPR letter may be provided by the Corps to notify the requestor that an activity will not require a permit (authorization) from the Corps; this letter can only be used if the proposed activity is not a regulated activity, regardless of where the activity may occur. A NPR letter cannot be used to indicate the presence or absence of wetlands and/or other aquatic resources, nor can it be used to determine their jurisdictional status.

### IV. LEGAL RIGHT OF ENTRY

By signing below, I am indicating that I have the authority, or am acting as the duly authorized agent of a person or entity with such authority, to and do hereby grant U.S. Army Corps of Engineers personnel right of entry to legally access the property(ies) subject to this request for the purposes of conducting on-site investigations (e.g., digging and refilling shallow holes) and issuing a jurisdictional determination. I acknowledge that my signature is an affirmation that I possess the requisite property rights to request a jurisdictional determination on the properties subject to this request.

502 Shadwood Ct., SIMPSONVILLE, SC 29201 188-00-00-003 and 188-00-00-003  
Mailing Address Property Address / TMS #(s)

Debalphin@aol.com 864-430-1774  
Email Address Daytime Phone Number

Deborah G. Alphin Deborah G. Alphin  
\*Signature: Printed Name and Date

<b>Charleston Office:</b> US Army Corps of Engineers Regulatory Division 69A Hagood Avenue Charleston, SC 29403 (ph) 843-328-8044	<b>Columbia Office:</b> US Army Corps of Engineers Regulatory Office 1835 Assembly Street, Room 865 B-1 Columbia, SC 29201 (ph) 803-253-3444	<b>Conway Office:</b> US Army Corps of Engineers Regulatory Office 1949 Industrial Park Road, Room 140 Conway, SC 29526 (ph) 843-365-4239
--	---	--

\***Authorities:** Rivers and Harbors Act, Section 10, 33 USC 403; Clean Water Act, Section 404, 33 USC 1344; Marine Protection, Research, and Sanctuaries Act, Section 103, 33 USC 1413; Regulatory Program of the U.S. Army Corps of Engineers; Final Rule for 33 CFR Parts 320-332.

**Principal Purpose:** The information that you provide will be used in evaluating your request to determine whether there are any aquatic resources within the project area subject to federal jurisdiction under the regulatory authorities referenced above.

**Routine Uses:** This information may be shared with the Department of Justice and other federal, state, and local government agencies, and the public, and may be made available as part of a public notice as required by federal law. Your name and property location where federal jurisdiction is to be determined will be included in the approved jurisdictional determination (AJD), which will be made available to the public on the District's website and on the Headquarters USACE website.

**Disclosure:** Submission of requested information is voluntary; however, if information is not provided, the request for an jurisdictional determination cannot be evaluated nor can a jurisdictional determination be issued.

## **JURISDICTIONAL DETERMINATION AND DELINEATION GUIDE**

The information listed below should be submitted with Jurisdictional Determination Requests and/or Delineations. To reduce delays in verifying Jurisdictional Determinations and Delineations, it is recommended that the information provided is a complete and true representation of wetlands and other aquatic resources that may be present onsite.

### **1. Recommended Site Information**

- Location Maps: large-scale and small-scale maps, including streets, intersections, cities and an accurate depiction of the site boundary shown.
- Overlay of site boundary on aerial photo, USGS topographic map, soil survey, NWI Map, etc.
- Landscape photos of representative upland areas and aquatic resources, with the photo locations and directions of photos marked on a depiction.
- Wetland Determination Data Forms (current version from appropriate Regional Supplement)
- Depiction of all aquatic resources and pertinent features that are present (Wetlands, Tributaries, Lakes, Borrow Pits, Ponds, Rivers, Drainage Features, Ditches) preferably on an aerial photo using no-fill polygons with the following information marked: Wetland Determination Data Form point locations with labels and photo locations and directions.

### **2. Recommended Elements for Depictions of All Sites**

- Title Block with project name, applicant, county, state, date.
- Solid bold line depicting project area boundary with label. The project area boundary should be accurate and may be represented by survey, tax map, or GPS coordinates with coordinates provided. Tax maps may only be used if the project area includes the entire parcel(s). If a tax map is used, include the Tax Map Parcel Numbers, Property Identification Numbers, etc., the source of the map, and date of preparation (print date).
- North arrow
- Clearly marked boundaries of all wetlands and/or other aquatic resources and other pertinent features that are present (Wetlands, Tributaries, Lakes, Borrow Pits, Ponds, Rivers, Drainage Features, Ditches). Although not required, surveyed or GPS coordinates of the boundaries may be provided. Labels of wetlands and/or other aquatic resources. Refer to the below tables for the standardized labels that should be used for AJDs, PJDs and/or Delineations only.
- Size of the site (acres) included on the depiction.
- If present, the size (acres) and length (linear feet) of each individual linear aquatic resource included on the depiction.
- If present, the size (acres) of each individual non-linear wetland and/or other aquatic resources included on the depiction.

**Table 1: Labels for PJDs and Delineations Only**

Label	Description
Wetland X (tidal, non-tidal)	All wetlands, including tidal wetlands.
Non-wetlands waters X (tidal, non-tidal)	All non-wetland aquatic resources (ponds, linear features, tributaries, tidal open water.
Upland	Uplands should be labeled
Non-aquatic resource X (Optional) *	Features determined by the Corps to be non-aquatic resources.

**Table 2: Labels for AJDs**

Jurisdictional Feature Label	Description
TNW X	Traditionally Navigable Water, tidal wetland, or and/or OCRM Critical Area Wetland
Jurisdictional Tributary X	Tributary, relatively permanent water, or stream bed
Jurisdictional Wetland X	Meeting 3-parameters per 1987 Delineation Manual
Other Jurisdictional WOUS X	Other Waters of the United States such as ponds, lakes, ditches, impoundments, etc.
Non-jurisdictional Wetland X	Wetland determined by the Corps to be non-jurisdictional
Non-jurisdictional Feature X (Optional)*	Non-jurisdictional ponds, borrow-pits, linear features, ditches, etc.
Upland	Uplands should be labeled when wetlands or other waters, regardless of jurisdictional status, are present. When no wetlands or other waters are present, the "Upland" label is not necessary.

\*Optional - Non-Jurisdictional Linear Features or ditches for AJDs and non-aquatic resources for PJDs are not required to be included on the depiction but should be shown and provided on a supplemental sketch.

U.S. Army Corps of Engineers – Charleston District - Regulatory Division  
**REQUEST FOR CORPS JURISDICTIONAL DETERMINATION (JD) / DELINEATION**  
(For Jurisdictional Status and Identifying Wetlands and Other Aquatic Resources)

**I. PROPERTY AND AGENT INFORMATION**

**A. Site Details/Location:**

Site Name: The Connexial Center Date: 5/1/2018  
City/Township/Parish: Gray Court County: Laurens  
Latitude/Longitude: 34.645896° / -82.127634° Acreage: 85.567  
Tax Map Sequence (TMS) #(s): 188-00-00-003 and 188-00-00-003  
Property Address(es): Intersection of Old Dairy Road and Friendship Church Road  
☒ Please attach a survey/plat map and vicinity map identifying location and review area for the JD/delineation.  
An accurate depiction of the review area must be provided (survey, tax map, or GPS coordinates). Tax maps may only be used if the site includes the entire tax map parcel.

**B. Requestor of Jurisdictional Determination/Delineation (if there are multiple property owners, please attach additional pages)**

Name: Judy C. Brooks  
Company Name (if applicable):  
Address: 109 Inn Circle, Fountain Inn, S.C. 29644  
Phone: 864-862-3661 Email: docbrooks@att.net  
Check one: ☒ I currently own this property  
☐ I plan to purchase this property  
☐ Other, please explain

**C. Agent/Environmental Consultant Acting on Behalf of the Requestor (if applicable):**

Consultant/Agent Name: Ted Melchers  
Company Name: Terracon Consultants  
Address: 1450 Fifth Street West Phone: 843-884-1234  
Email: ted.melchers@terracon.com

**II. REASON FOR REQUEST (check all that apply)**

- ☐ I intend to construct/develop a project or perform activities on this site which would be designed to avoid all aquatic resources.
- ☐ I intend to construct/develop a project or perform activities on this site which would be designed to avoid all jurisdictional aquatic resources under Corps authority.
- ☒ I intend to construct/develop a project or perform activities on this site which may require authorization from the Corps, and the Jurisdictional Determination would be used to avoid and minimize impacts to jurisdictional aquatic resources and as an initial step in a future permitting process.
- ☐ I intend to construct/develop a project or perform activities on this site which may require authorization from the Corps; this request is accompanied by my permit application and the jurisdictional determination is to be used in the permitting process.
- ☐ I intend to construct/develop a project or perform activities in a navigable water of the U.S. which is subject to the ebb and flow of the tide.
- ☐ A Corps jurisdictional determination is required in order to obtain my local/state authorization.
- ☐ I intend to contest jurisdiction over a particular aquatic resource and the request the Corps to confirm that jurisdiction does/does not exist over the aquatic resource on the parcel.
- ☐ I believe that the site may be comprised entirely of dry land.
- ☐ Other:

\*Authorities: Rivers and Harbors Act, Section 10, 33 USC 403; Clean Water Act, Section 404, 33 USC 1344; Marine Protection, Research, and Sanctuaries Act, Section 103, 33 USC 1413; Regulatory Program of the U.S. Army Corps of Engineers; Final Rule for 33 CFR Parts 320-332.

Principal Purpose: The information that you provide will be used in evaluating your request to determine whether there are any aquatic resources within the project area subject to federal jurisdiction under the regulatory authorities referenced above.

Routine Uses: This information may be shared with the Department of Justice and other federal, state, and local government agencies, and the public, and may be made available as part of a public notice as required by federal law. Your name and property location where federal jurisdiction is to be determined will be included in the approved jurisdictional determination (AJD), which will be made available to the public on the District's website and on the Headquarters USACE website.

Disclosure: Submission of requested information is voluntary; however, if information is not provided, the request for an jurisdictional determination cannot be evaluated nor can a jurisdictional determination be issued.

### III. TYPE OF REQUEST:

- ☒ **Approved<sup>1</sup> Jurisdictional Determination (AJD) Only**
- ☐ **Preliminary<sup>2</sup> Jurisdictional Determination (PJD) Only**
- ☐ **Approved Jurisdictional Determination (AJD)** with submittal of a Pre-Construction Notification or Department of the Army permit application
- ☐ **Preliminary Jurisdictional Determination (PJD)** with submittal of a Pre-Construction Notification or Department of the Army permit application
- ☐ **Delineation of Wetlands and/or Other Aquatic Resources Only Conducted By Agent/Environmental Consultant** with submittal of a Pre-Construction Notification or Department of the Army permit application (No jurisdictional determination requested)
- ☐ I request that the **Corps delineate** the wetlands and/or other aquatic resources that may be present on my property with the attached **Pre-Construction Notification or Department of the Army permit application**
- ☐ I request that the **Corps delineate** the wetlands and/or other aquatic resources that may be present on my property **with an AJD or PJD**
- ☐ **"No Permit Required" (NPR) Letter** as I believe my proposed activity is not regulated<sup>3</sup>
- ☐ **Unclear** as to which jurisdictional determination I would like to request and require additional information to inform my decision

<sup>1</sup>**Approved** – An AJD is defined in Corps regulations at 33 CFR 331.2. As explained in further detail in RGL 16-01, an AJD is used to indicate that this office has identified the presence or absence of wetlands and/or other aquatic resources on a site, including their accurate location(s) and boundaries, as well as their jurisdictional status. AJDs are valid for 5 years.

<sup>2</sup>**Preliminary** – A PJD is defined in Corps regulations at 33 CFR 331.2. As explained in further detail in RGL 16-01, a PJD is used to indicate that this office has identified the approximate location(s) and boundaries of wetlands and/or other aquatic resources on a site that are presumed to be subject to regulatory jurisdiction of the Corps of Engineers. Unlike an AJD, a PJD does not represent a definitive, official determination that there are, or that there are not, jurisdictional aquatic resources on a site, and does not have an expiration date.

<sup>3</sup> **"No Permit Required" (NPR) Letter** - A NPR letter may be provided by the Corps to notify the requestor that an activity will not require a permit (authorization) from the Corps; this letter can only be used if the proposed activity is not a regulated activity, regardless of where the activity may occur. A NPR letter cannot be used to indicate the presence or absence of wetlands and/or other aquatic resources, nor can it be used to determine their jurisdictional status.

### IV. LEGAL RIGHT OF ENTRY

By signing below, I am indicating that I have the authority, or am acting as the duly authorized agent of a person or entity with such authority, to and do hereby grant U.S. Army Corps of Engineers personnel right of entry to legally access the property(ies) subject to this request for the purposes of conducting on-site investigations (e.g., digging and refilling shallow holes) and issuing a jurisdictional determination. I acknowledge that my signature is an affirmation that I possess the requisite property rights to request a jurisdictional determination on the properties subject to this request.

109 InnCircle, Fountain Inn, SC.  
Mailing Address

188-00-00-003 and 188-00-00-003

Property Address / TMS #(s)

dozbrooks@att.net  
Email Address

864-862-3661  
Daytime Phone Number

Judy C. Brooks  
\*Signature:

Judy C. Brooks 5/4/2018  
Printed Name and Date

<b>Charleston Office:</b> US Army Corps of Engineers Regulatory Division 69A Hagood Avenue Charleston, SC 29403 (ph) 843-329-8044	<b>Columbia Office:</b> US Army Corps of Engineers Regulatory Office 1835 Assembly Street, Room 865 B-1 Columbia, SC 29201 (ph) 803-253-3444	<b>Conway Office:</b> US Army Corps of Engineers Regulatory Office 1949 Industrial Park Road, Room 140 Conway, SC 29526 (ph) 843-365-4239
--	---	--

\***Authorities:** Rivers and Harbors Act, Section 10, 33 USC 403; Clean Water Act, Section 404, 33 USC 1344; Marine Protection, Research, and Sanctuaries Act, Section 103, 33 USC 1413; Regulatory Program of the U.S. Army Corps of Engineers; Final Rule for 33 CFR Parts 320-332.

**Principal Purpose:** The information that you provide will be used in evaluating your request to determine whether there are any aquatic resources within the project area subject to federal jurisdiction under the regulatory authorities referenced above.

**Routine Uses:** This information may be shared with the Department of Justice and other federal, state, and local government agencies, and the public, and may be made available as part of a public notice as required by federal law. Your name and property location where federal jurisdiction is to be determined will be included in the approved jurisdictional determination (AJD), which will be made available to the public on the District's website and on the Headquarters USACE website.

**Disclosure:** Submission of requested information is voluntary; however, if information is not provided, the request for an jurisdictional determination cannot be evaluated nor can a jurisdictional determination be issued.



## **JURISDICTIONAL DETERMINATION AND DELINEATION GUIDE**

The information listed below should be submitted with Jurisdictional Determination Requests and/or Delineations. To reduce delays in verifying Jurisdictional Determinations and Delineations, it is recommended that the information provided is a complete and true representation of wetlands and other aquatic resources that may be present onsite.

### **1. Recommended Site Information**

- Location Maps: large-scale and small-scale maps, including streets, intersections, cities and an accurate depiction of the site boundary shown.
- Overlay of site boundary on aerial photo, USGS topographic map, soil survey, NWI Map, etc.
- Landscape photos of representative upland areas and aquatic resources, with the photo locations and directions of photos marked on a depiction.
- Wetland Determination Data Forms (current version from appropriate Regional Supplement)
- Depiction of all aquatic resources and pertinent features that are present (Wetlands, Tributaries, Lakes, Borrow Pits, Ponds, Rivers, Drainage Features, Ditches) preferably on an aerial photo using no-fill polygons with the following information marked: Wetland Determination Data Form point locations with labels and photo locations and directions.

### **2. Recommended Elements for Depictions of All Sites**

- Title Block with project name, applicant, county, state, date.
- Solid bold line depicting project area boundary with label. The project area boundary should be accurate and may be represented by survey, tax map, or GPS coordinates with coordinates provided. Tax maps may only be used if the project area includes the entire parcel(s). If a tax map is used, include the Tax Map Parcel Numbers, Property Identification Numbers, etc., the source of the map, and date of preparation (print date).
- North arrow
- Clearly marked boundaries of all wetlands and/or other aquatic resources and other pertinent features that are present (Wetlands, Tributaries, Lakes, Borrow Pits, Ponds, Rivers, Drainage Features, Ditches). Although not required, surveyed or GPS coordinates of the boundaries may be provided. Labels of wetlands and/or other aquatic resources. Refer to the below tables for the standardized labels that should be used for AJDs, PJDs and/or Delineations only.
- Size of the site (acres) included on the depiction.
- If present, the size (acres) and length (linear feet) of each individual linear aquatic resource included on the depiction.
- If present, the size (acres) of each individual non-linear wetland and/or other aquatic resources included on the depiction.

**Table 1: Labels for PJDs and Delineations Only**

Label	Description
Wetland X (tidal, non-tidal)	All wetlands, including tidal wetlands.
Non-wetlands waters X (tidal, non-tidal)	All non-wetland aquatic resources (ponds, linear features, tributaries, tidal open water.
Upland	Uplands should be labeled
Non-aquatic resource X (Optional) *	Features determined by the Corps to be non-aquatic resources.

**Table 2: Labels for AJDs**

Jurisdictional Feature Label	Description
TNW X	Traditionally Navigable Water, tidal wetland, or and/or OCRM Critical Area Wetland
Jurisdictional Tributary X	Tributary, relatively permanent water, or stream bed
Jurisdictional Wetland X	Meeting 3-parameters per 1987 Delineation Manual
Other Jurisdictional WOUS X	Other Waters of the United States such as ponds, lakes, ditches, impoundments, etc.
Non-jurisdictional Wetland X	Wetland determined by the Corps to be non-jurisdictional
Non-jurisdictional Feature X (Optional)*	Non-jurisdictional ponds, borrow-pits, linear features, ditches, etc.
Upland	Uplands should be labeled when wetlands or other waters, regardless of jurisdictional status, are present. When no wetlands or other waters are present, the "Upland" label is not necessary.

\*Optional - Non-Jurisdictional Linear Features or ditches for AJDs and non-aquatic resources for PJDs are not required to be included on the depiction but should be shown and provided on a supplemental sketch.

U.S. Army Corps of Engineers – Charleston District - Regulatory Division  
**REQUEST FOR CORPS JURISDICTIONAL DETERMINATION (JD) / DELINEATION**  
(For Jurisdictional Status and Identifying Wetlands and Other Aquatic Resources)

**I. PROPERTY AND AGENT INFORMATION**

**A. Site Details/Location:**

Site Name: The Connexial Center Date: 5/1/2018  
City/Township/Parish: Gray Court County: Laurens  
Latitude/Longitude: 34.645896° / -82.127634° Acreage: 85.567  
Tax Map Sequence (TMS) #(s): 188-00-00-003 and 188-00-00-003  
Property Address(es): Intersection of Old Dairy Road and Friendship Church Road  
☒ Please attach a survey/plat map and vicinity map identifying location and review area for the JD/delineation.  
An accurate depiction of the review area must be provided (survey, tax map, or GPS coordinates). Tax maps may only be used if the site includes the entire tax map parcel.

**B. Requestor of Jurisdictional Determination/Delineation (if there are multiple property owners, please attach additional pages)**

Name: Elizabeth Ann Gunter  
Company Name (if applicable): \_\_\_\_\_  
Address: 303 Woodbridge Way, Simpsonville SC 29681  
Phone: 864-901-5576 Email: bgunter2018@gmail.com  
Check one: ☒ I currently own this property  
☐ I plan to purchase this property  
☐ Other, please explain \_\_\_\_\_

**C. Agent/Environmental Consultant Acting on Behalf of the Requestor (if applicable):**

Consultant/Agent Name: Ted Melchers  
Company Name: Terracon Consultants  
Address: 1450 Fifth Street West Phone: 843-884-1234  
Email: ted.melchers@terracon.com

**II. REASON FOR REQUEST (check all that apply)**

- ☐ I intend to construct/develop a project or perform activities on this site which would be designed to avoid all aquatic resources.
- ☐ I intend to construct/develop a project or perform activities on this site which would be designed to avoid all jurisdictional aquatic resources under Corps authority.
- ☒ I intend to construct/develop a project or perform activities on this site which may require authorization from the Corps, and the Jurisdictional Determination would be used to avoid and minimize impacts to jurisdictional aquatic resources and as an initial step in a future permitting process.
- ☐ I intend to construct/develop a project or perform activities on this site which may require authorization from the Corps; this request is accompanied by my permit application and the jurisdictional determination is to be used in the permitting process.
- ☐ I intend to construct/develop a project or perform activities in a navigable water of the U.S. which is subject to the ebb and flow of the tide.
- ☐ A Corps jurisdictional determination is required in order to obtain my local/state authorization.
- ☐ I intend to contest jurisdiction over a particular aquatic resource and the request the Corps to confirm that jurisdiction does/does not exist over the aquatic resource on the parcel.
- ☐ I believe that the site may be comprised entirely of dry land.
- ☐ Other: \_\_\_\_\_

\*Authorities: Rivers and Harbors Act, Section 10, 33 USC 403; Clean Water Act, Section 404, 33 USC 1344; Marine Protection, Research, and Sanctuaries Act, Section 103, 33 USC 1413; Regulatory Program of the U.S. Army Corps of Engineers; Final Rule for 33 CFR Parts 320-332.

Principal Purpose: The information that you provide will be used in evaluating your request to determine whether there are any aquatic resources within the project area subject to federal jurisdiction under the regulatory authorities referenced above.

Routine Uses: This information may be shared with the Department of Justice and other federal, state, and local government agencies, and the public, and may be made available as part of a public notice as required by federal law. Your name and property location where federal jurisdiction is to be determined will be included in the approved jurisdictional determination (AJD), which will be made available to the public on the District's website and on the Headquarters USACE website.

Disclosure: Submission of requested information is voluntary; however, if information is not provided, the request for an jurisdictional determination cannot be evaluated nor can a jurisdictional determination be issued.



### III. TYPE OF REQUEST:

- ☒ **Approved<sup>1</sup> Jurisdictional Determination (AJD) Only**
- ☐ **Preliminary<sup>2</sup> Jurisdictional Determination (PJD) Only**
- ☐ **Approved Jurisdictional Determination (AJD) with submittal of a Pre-Construction Notification or Department of the Army permit application**
- ☐ **Preliminary Jurisdictional Determination (PJD) with submittal of a Pre-Construction Notification or Department of the Army permit application**
- ☐ **Delineation of Wetlands and/or Other Aquatic Resources Only Conducted By Agent/Environmental Consultant with submittal of a Pre-Construction Notification or Department of the Army permit application (No jurisdictional determination requested)**
- ☐ I request that the **Corps delineate** the wetlands and/or other aquatic resources that may be present on my property with the attached **Pre-Construction Notification or Department of the Army permit application**
- ☐ I request that the **Corps delineate** the wetlands and/or other aquatic resources that may be present on my property with an **AJD or PJD**
- ☐ **"No Permit Required" (NPR) Letter** as I believe my proposed activity is not regulated<sup>3</sup>
- ☐ **Unclear** as to which jurisdictional determination I would like to request and require additional information to inform my decision

<sup>1</sup>**Approved** – An AJD is defined in Corps regulations at 33 CFR 331.2. As explained in further detail in RGL 16-01, an AJD is used to indicate that this office has identified the presence or absence of wetlands and/or other aquatic resources on a site, including their accurate location(s) and boundaries, as well as their jurisdictional status. AJDs are valid for 5 years.

<sup>2</sup>**Preliminary** – A PJD is defined in Corps regulations at 33 CFR 331.2. As explained in further detail in RGL 16-01, a PJD is used to indicate that this office has identified the approximate location(s) and boundaries of wetlands and/or other aquatic resources on a site that are presumed to be subject to regulatory jurisdiction of the Corps of Engineers. Unlike an AJD, a PJD does not represent a definitive, official determination that there are, or that there are not, jurisdictional aquatic resources on a site, and does not have an expiration date.

<sup>3</sup> **"No Permit Required" (NPR) Letter** - A NPR letter may be provided by the Corps to notify the requestor that an activity will not require a permit (authorization) from the Corps; this letter can only be used if the proposed activity is not a regulated activity, regardless of where the activity may occur. A NPR letter cannot be used to indicate the presence or absence of wetlands and/or other aquatic resources, nor can it be used to determine their jurisdictional status.

### IV. LEGAL RIGHT OF ENTRY

By signing below, I am indicating that I have the authority, or am acting as the duly authorized agent of a person or entity with such authority, to and do hereby grant U.S. Army Corps of Engineers personnel right of entry to legally access the property(ies) subject to this request for the purposes of conducting on-site investigations (e.g., digging and refilling shallow holes) and issuing a jurisdictional determination. I acknowledge that my signature is an affirmation that I possess the requisite property rights to request a jurisdictional determination on the properties subject to this request.

303 Woodbridge Way, Simpsonville SC

Mailing Address

188-00-00-003 and 188-00-00-003

Property Address / TMS #(s)

baunter2018@gmail.com

Email Address

864-901-5576

Daytime Phone Number

Elizabeth Ann Gunter

\*Signature:

Elizabeth Ann Gunter, 5-3-2018

Printed Name and Date

<b>Charleston Office:</b> US Army Corps of Engineers Regulatory Division 69A Hagood Avenue Charleston, SC 29403 (ph) 843-329-8044	<b>Columbia Office:</b> US Army Corps of Engineers Regulatory Office 1835 Assembly Street, Room 865 B-1 Columbia, SC 29201 (ph) 803-253-3444	<b>Conway Office:</b> US Army Corps of Engineers Regulatory Office 1949 Industrial Park Road, Room 140 Conway, SC 29526 (ph) 843-365-4239
--	---	--

\***Authorities:** Rivers and Harbors Act, Section 10, 33 USC 403; Clean Water Act, Section 404, 33 USC 1344; Marine Protection, Research, and Sanctuaries Act, Section 103, 33 USC 1413; Regulatory Program of the U.S. Army Corps of Engineers; Final Rule for 33 CFR Parts 320-332.

**Principal Purpose:** The information that you provide will be used in evaluating your request to determine whether there are any aquatic resources within the project area subject to federal jurisdiction under the regulatory authorities referenced above.

**Routine Uses:** This information may be shared with the Department of Justice and other federal, state, and local government agencies, and the public, and may be made available as part of a public notice as required by federal law. Your name and property location where federal jurisdiction is to be determined will be included in the approved jurisdictional determination (AJD), which will be made available to the public on the District's website and on the Headquarters USACE website.

**Disclosure:** Submission of requested information is voluntary; however, if information is not provided, the request for an jurisdictional determination cannot be evaluated nor can a jurisdictional determination be issued.

## **JURISDICTIONAL DETERMINATION AND DELINEATION GUIDE**

The information listed below should be submitted with Jurisdictional Determination Requests and/or Delineations. To reduce delays in verifying Jurisdictional Determinations and Delineations, it is recommended that the information provided is a complete and true representation of wetlands and other aquatic resources that may be present onsite.

### **1. Recommended Site Information**

- Location Maps: large-scale and small-scale maps, including streets, intersections, cities and an accurate depiction of the site boundary shown.
- Overlay of site boundary on aerial photo, USGS topographic map, soil survey, NWI Map, etc.
- Landscape photos of representative upland areas and aquatic resources, with the photo locations and directions of photos marked on a depiction.
- Wetland Determination Data Forms (current version from appropriate Regional Supplement)
- Depiction of all aquatic resources and pertinent features that are present (Wetlands, Tributaries, Lakes, Borrow Pits, Ponds, Rivers, Drainage Features, Ditches) preferably on an aerial photo using no-fill polygons with the following information marked: Wetland Determination Data Form point locations with labels and photo locations and directions.

### **2. Recommended Elements for Depictions of All Sites**

- Title Block with project name, applicant, county, state, date.
- Solid bold line depicting project area boundary with label. The project area boundary should be accurate and may be represented by survey, tax map, or GPS coordinates with coordinates provided. Tax maps may only be used if the project area includes the entire parcel(s). If a tax map is used, include the Tax Map Parcel Numbers, Property Identification Numbers, etc., the source of the map, and date of preparation (print date).
- North arrow
- Clearly marked boundaries of all wetlands and/or other aquatic resources and other pertinent features that are present (Wetlands, Tributaries, Lakes, Borrow Pits, Ponds, Rivers, Drainage Features, Ditches). Although not required, surveyed or GPS coordinates of the boundaries may be provided. Labels of wetlands and/or other aquatic resources. Refer to the below tables for the standardized labels that should be used for AJDs, PJDs and/or Delineations only.
- Size of the site (acres) included on the depiction.
- If present, the size (acres) and length (linear feet) of each individual linear aquatic resource included on the depiction.
- If present, the size (acres) of each individual non-linear wetland and/or other aquatic resources included on the depiction.

**Table 1: Labels for PJDs and Delineations Only**

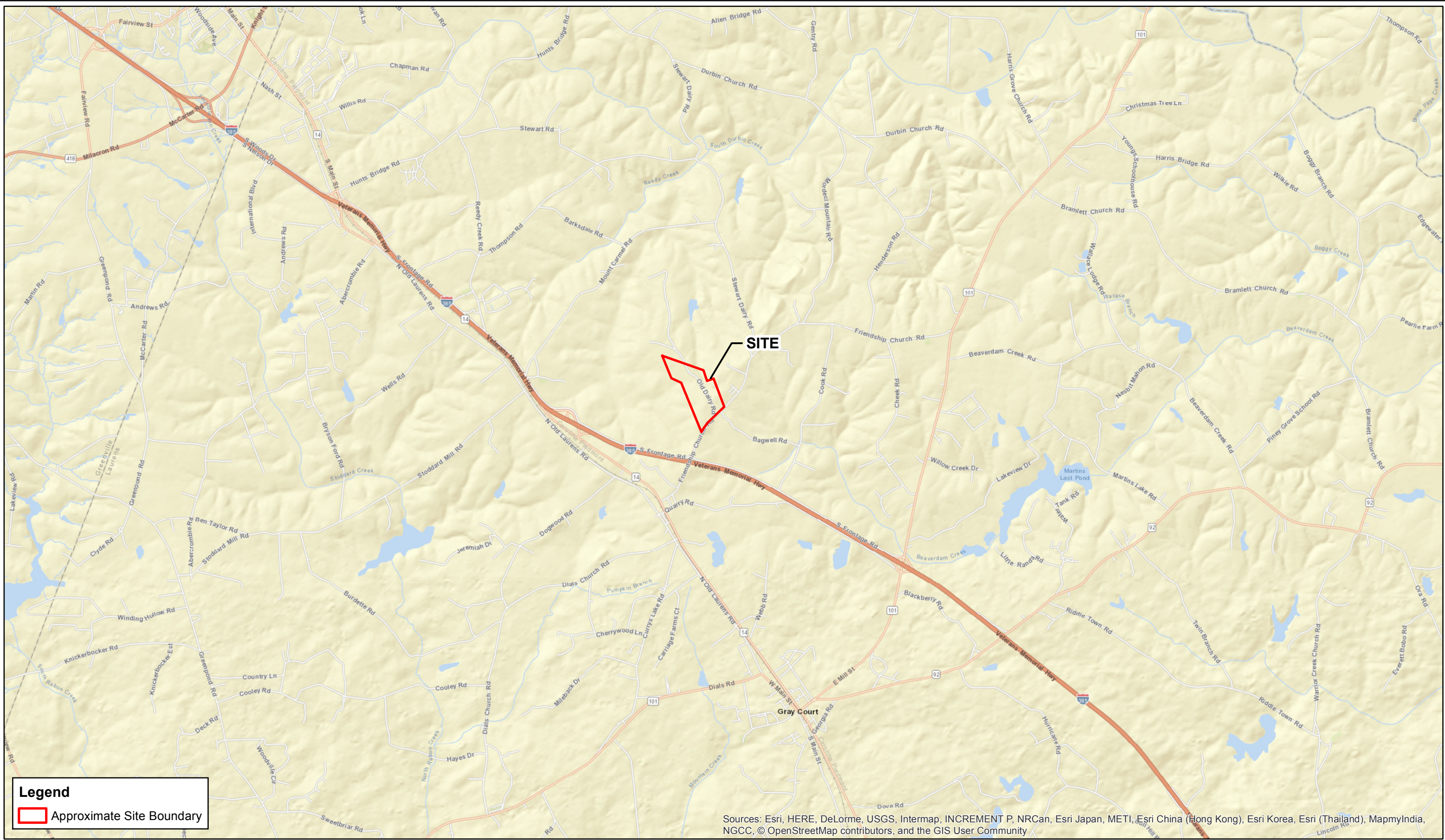
Label	Description
Wetland X (tidal, non-tidal)	All wetlands, including tidal wetlands.
Non-wetlands waters X (tidal, non-tidal)	All non-wetland aquatic resources (ponds, linear features, tributaries, tidal open water.
Upland	Uplands should be labeled
Non-aquatic resource X (Optional) *	Features determined by the Corps to be non-aquatic resources.

**Table 2: Labels for AJDs**

Jurisdictional Feature Label	Description
TNW X	Traditionally Navigable Water, tidal wetland, or and/or OCRM Critical Area Wetland
Jurisdictional Tributary X	Tributary, relatively permanent water, or stream bed
Jurisdictional Wetland X	Meeting 3-parameters per 1987 Delineation Manual
Other Jurisdictional WOUS X	Other Waters of the United States such as ponds, lakes, ditches, impoundments, etc.
Non-jurisdictional Wetland X	Wetland determined by the Corps to be non-jurisdictional
Non-jurisdictional Feature X (Optional)*	Non-jurisdictional ponds, borrow-pits, linear features, ditches, etc.
Upland	Uplands should be labeled when wetlands or other waters, regardless of jurisdictional status, are present. When no wetlands or other waters are present, the "Upland" label is not necessary.

\*Optional - Non-Jurisdictional Linear Features or ditches for AJDs and non-aquatic resources for PJDs are not required to be included on the depiction but should be shown and provided on a supplemental sketch.

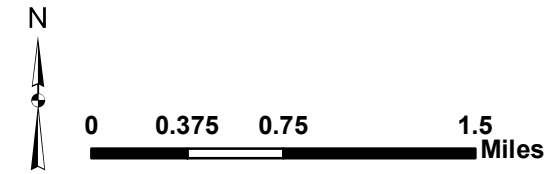




Legend

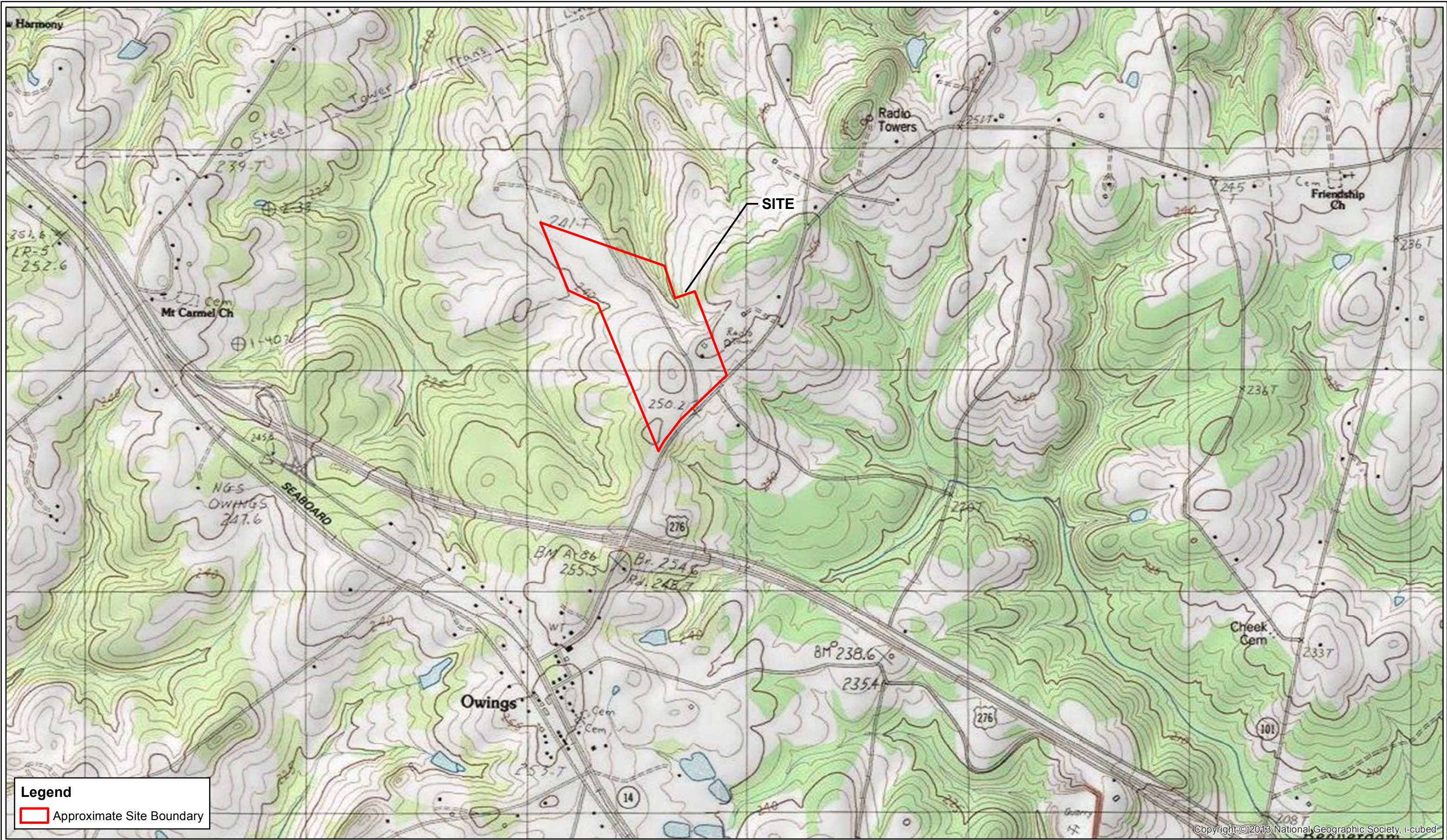
Approximate Site Boundary

Sources: Esri, HERE, DeLorme, USGS, Intermap, INCREMENT P, NRCan, Esri Japan, METI, Esri China (Hong Kong), Esri Korea, Esri (Thailand), MapmyIndia, NGCC, © OpenStreetMap contributors, and the GIS User Community



<div>Project No.</div> <div>EN187136</div> <div>PM:</div> <div>JTM</div> <div>Drawn By:</div> <div>JTM</div> <div>Date:</div> <div>4/16/2018</div>	<div>Terracon</div> <div>1450 Fifth Street WestN.Charleston, SC 29405</div> <div>Phone: 843.884.1234Fax: 843.884.9234</div>	<div>Site Location</div> <div>The Connexial Center</div> <div>Laurens CountySouth Carolina</div>	<div>EXHIBIT NO.</div> <div>1</div>
--	---	--	-------------------------------------





Copyright © 2013 National Geographic Society, i-cubed



0 0.125 0.25 0.5 Miles

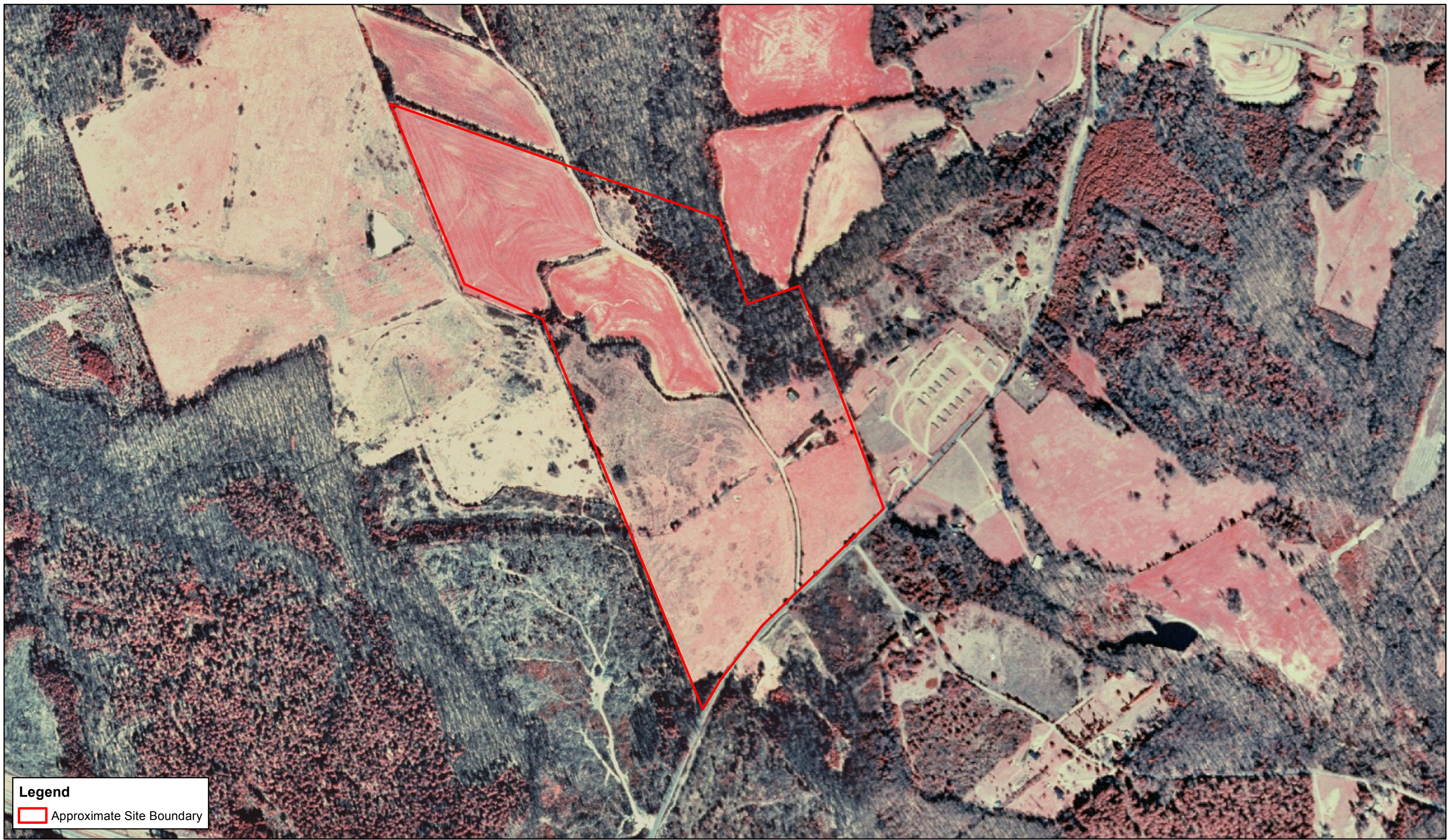
Project No.	EN187136
PM:	JTM
Drawn By:	JTM
Date:	4/16/2018

**Terracon**

1450 Fifth Street West N Charleston, SC 29405  
Phone: 843.884.1234 Fax: 843.884.9234

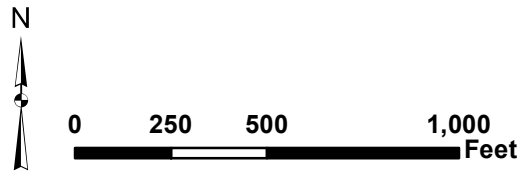
Fountain Inn, SC-USGS Topographic Map		EXHIBIT NO.
The Connexial Center		2
Laurens County	South Carolina	





**Legend**

Approximate Site Boundary



Project No.	EN187136
PM:	JTM
Drawn By:	JTM
Date:	4/16/2018

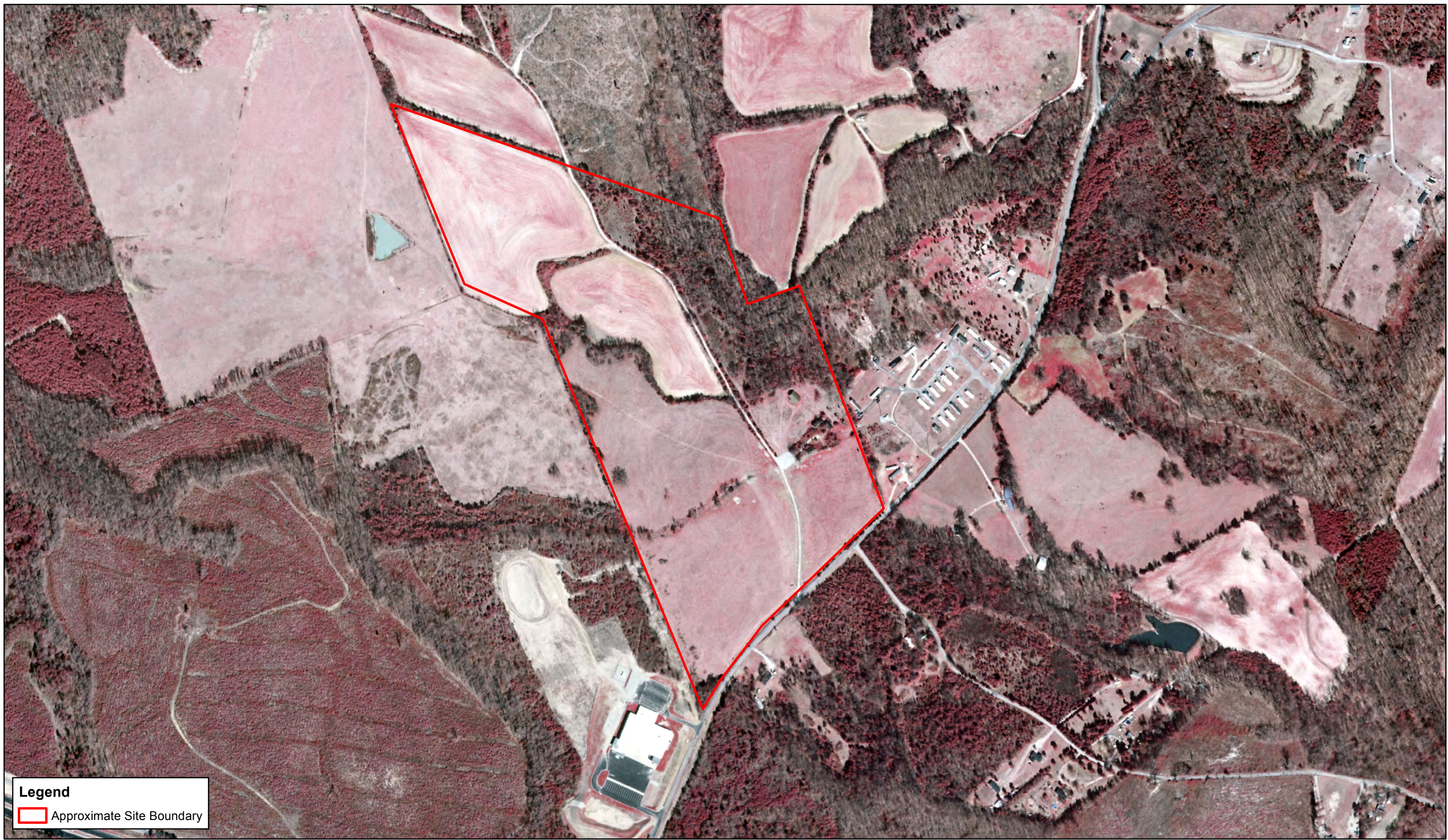
1450 Fifth Street West  
Phone: 843.884.1234

N.Charleston, SC 29405  
Fax: 843.884.9234


1999 Infrared Aerial
The Connexial Center
Laurens County South Carolina

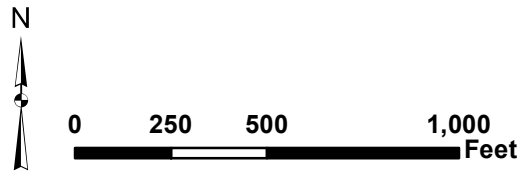
EXHIBIT NO.
3





**Legend**

 Approximate Site Boundary



Project No.	EN187136
PM:	JTM
Drawn By:	JTM
Date:	4/16/2018

**Terracon**

1450 Fifth Street West N.Charleston, SC 29405  
Phone: 843.884.1234 Fax: 843.884.9234

2006 Infrared Aerial		EXHIBIT NO.
The Connexial Center		4
Laurens County	South Carolina	





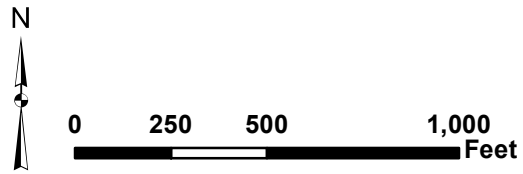
**Legend**

Approximate Site Boundary

NHDFlowline

FType

Stream/River



Project No.	EN187136
PM:	JTM
Drawn By:	JTM
Date:	4/16/2018

**Terracon**

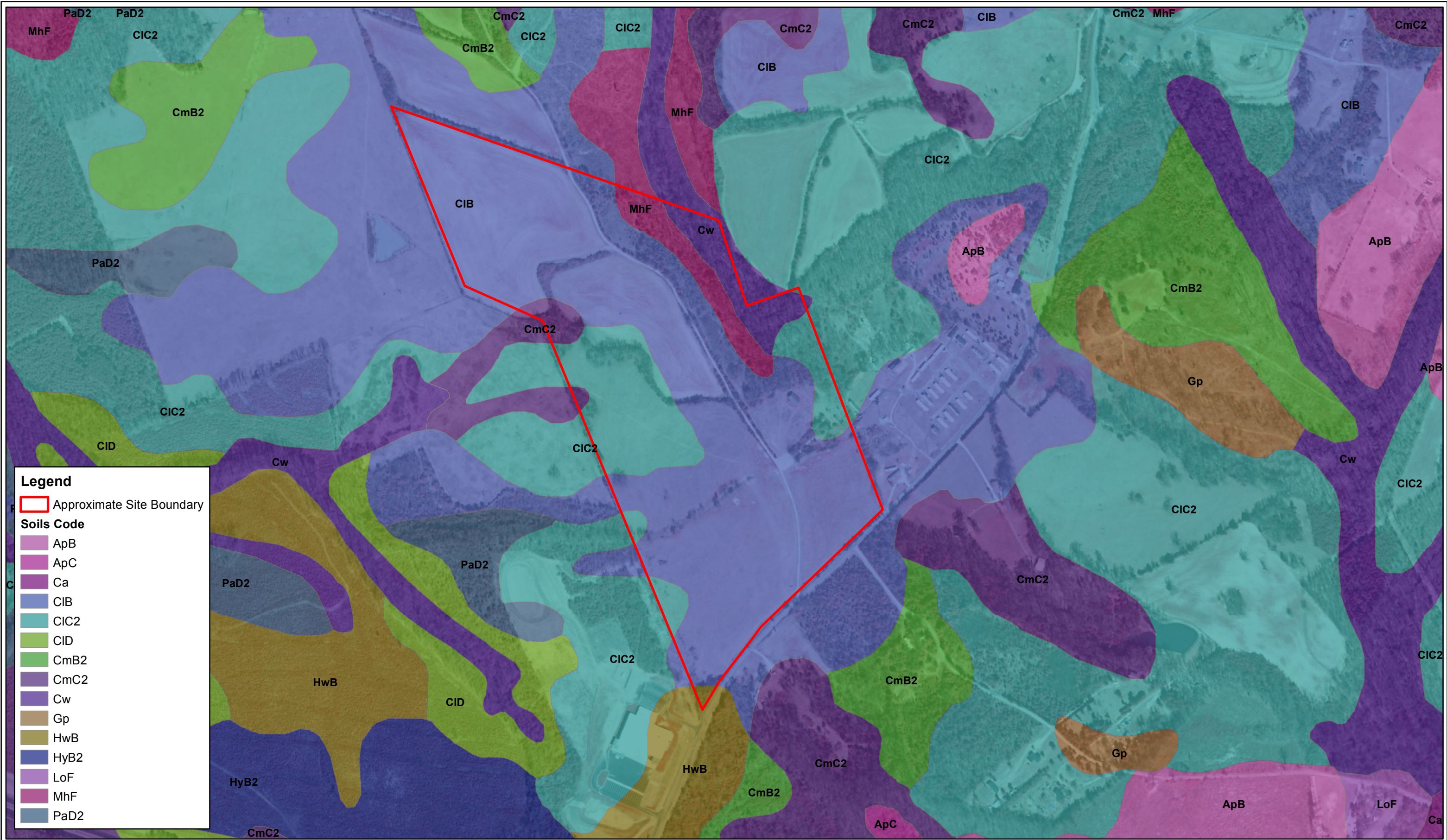
1450 Fifth Street WestN.Charleston, SC 29405

Phone: 843.884.1234Fax: 843.884.9234

2006 Infrared Aerial / USGS NHD / USFWS NWI	
The Connexial Center	
Laurens County	South Carolina

EXHIBIT NO.
5



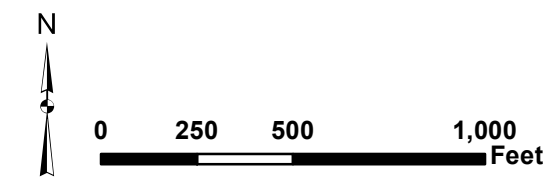


**Legend**

Approximate Site Boundary

**Soils Code**

- ApB
- ApC
- Ca
- CIB
- CIC2
- CID
- CmB2
- CmC2
- Cw
- Gp
- HwB
- HyB2
- LoF
- MhF
- PaD2



Project No. EN187136	 1450 Fifth Street West N.Charleston, SC 29405 Phone: 843.884.1234 Fax: 843.884.9234	2006 Infrared Aerial / USDA NRCS Soils Map		EXHIBIT NO.
PM: JTM		The Connexial Center		6
Drawn By: JTM				
Date: 4/16/2018		Laurens County	South Carolina	



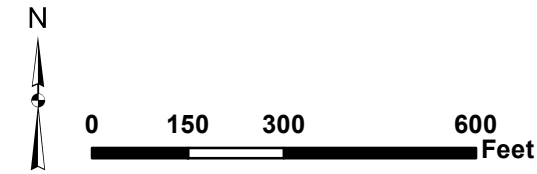



Numbers correspond to photos in attached photo log

**Legend**

- Jurisdictional Tributary
- Approximate Site Boundary
- ▲ Upland Data Point

Esri, HERE, Garmin, © OpenStreetMap contributors, Source: Esri, DigitalGlobe, GeoEye, Earthstar Geographics, CNES/Airbus DS, USDA, USGS, AeroGRID, IGN, and the GIS User Community



Project No. EN187136	 1450 Fifth Street West N Charleston, SC 29405 Phone: 843.884.1234 Fax: 843.884.9234	2017 Aerial / Photo Log Legend		EXHIBIT NO.
PM: JTM		The Connexial Center		7
Drawn By: JTM				
Date: 4/24/2018		Laurens County	South Carolina	





**Photo 1** View of DP-1 upland soil.



**Photo 2** View of upland area surrounding DP-1 looking north.





**Photo 3** View of upland area surrounding DP-1 looking east.



**Photo 4** View of upland area surrounding DP-1 looking south.





**Photo 5** View of upland area surrounding DP-1 looking west.



**Photo 6** View of Jurisdictional Tributary 1 looking north on the northern end.





**Photo 7** View of Jurisdictional Tributary 1 looking north.



**Photo 8** View of the end of Jurisdictional Tributary 1 looking south.



## WETLAND DETERMINATION DATA FORM - Eastern Mountains and Piedmont Region

Project/Site: The Connexial Center City/County: Gray Court/Laurens Sampling Date: 04/17/18  
 Applicant/Owner: \_\_\_\_\_ State: SC Sampling Point: DP-1 UP  
 Investigator(s): Ted Melchers Section, Township, Range: \_\_\_\_\_  
 Landform (hillslope, terrace, etc.): terrace Local relief (concave, convex, none): \_\_\_\_\_ Slope(%) 10-15%  
 Subregion (LRR or MLRA): MLRA 136 of LRR P Lat: 34.648511° Long: - 82.128888° Datum: NAD 83  
 Soil Map Unit Name: (MhF) Madison and Pacolet soils, 15 to 40 percent slopes NWI Classification: Not Mapped  
 Are climatic / hydrologic conditions of the site typical for this time of the year? Yes ☒ No ☐ (If no, explain in Remarks.)  
 Are Vegetation ☐ Soil ☐ or Hydrology ☐ significantly disturbed? ☐ Are "normal circumstances" present? Yes ☒ No ☐  
 Are Vegetation ☐ Soil ☐ or Hydrology ☐ naturally problematic? ☐ (If needed, explain any answers in remarks)

### SUMMARY OF FINDINGS - Attach site map showing sample point locations, transects, important features, etc.

Hydrophytic Vegetation Present?	Yes <input type="checkbox"/>	No <input checked="" type="checkbox"/>	
Hydric Soil Present?	Yes <input type="checkbox"/>	No <input checked="" type="checkbox"/>	<b>Is the sampled Area within a Wetland?</b> Yes <input type="checkbox"/> No <input checked="" type="checkbox"/>
Wetland Hydrology Present?	Yes <input type="checkbox"/>	No <input checked="" type="checkbox"/>	
Remarks:			

### HYDROLOGY

Wetland Hydrology Indicators:		Secondary Indicators (minimum of two required)	
Primary Indicators (minimum of one is required; check all that apply)			
<input type="checkbox"/> Surface Water (A1)	<input type="checkbox"/> True Aquatic Plants (B14)	<input type="checkbox"/> Surface Soil Cracks (B6)	
<input type="checkbox"/> High Water Table (A2)	<input type="checkbox"/> Hydrogen Sulfide Odor (C1)	<input type="checkbox"/> Sparsely Vegetated Concave Surface (B8)	
<input type="checkbox"/> Saturation (A3)	<input type="checkbox"/> Oxidized Rhizospheres on Living Roots (C3)	<input type="checkbox"/> Drainage Patterns (B10)	
<input type="checkbox"/> Water Marks (B1)	<input type="checkbox"/> Presence of Reduced Iron (C4)	<input type="checkbox"/> Moss Trim Lines (B16)	
<input type="checkbox"/> Sediment Deposits (B2)	<input type="checkbox"/> Recent Iron Reduction in Tilled Soils (C6)	<input type="checkbox"/> Dry-Season Water Table (C2)	
<input type="checkbox"/> Drift Deposits (B3)	<input type="checkbox"/> Thin Muck Surface (C7)	<input type="checkbox"/> Crayfish Burrows (C8)	
<input type="checkbox"/> Algal Mat or Crust (B4)	<input type="checkbox"/> Other (Explain in Remarks)	<input type="checkbox"/> Saturation Visible on Aerial Imagery (C9)	
<input type="checkbox"/> Iron Deposits (B5)		<input type="checkbox"/> Stunted or Stressed Plants (D1)	
<input type="checkbox"/> Inundation Visible on Aerial Imagery		<input type="checkbox"/> Geomorphic Position (D2)	
<input type="checkbox"/> Water-Stained Leaves (B9)		<input type="checkbox"/> Shallow Aquitard (D3)	
<input type="checkbox"/> Aquatic Fauna (B13)		<input type="checkbox"/> Microtopographic Relief (D4)	
		<input type="checkbox"/> FAC-Neutral Test (D5)	
<b>Field Observations:</b> Surface water present? Yes <input type="checkbox"/> No <input type="checkbox"/> Depth (inches): _____ Water table present? Yes <input type="checkbox"/> No <input type="checkbox"/> Depth (inches): _____ Saturation present? Yes <input type="checkbox"/> No <input type="checkbox"/> Depth (inches): _____ (includes capillary fringe)		Wetland Hydrology Present? Yes <input type="checkbox"/> No <input checked="" type="checkbox"/>	
Describe recorded data (stream gauge, monitoring well, aerial photos, previous inspections), if available:			
Remarks:			



**VEGETATION (Five Strata) - Use scientific names of plants**

Sampling Point: DP-1 UP

Tree Stratum      Plot Size ( 30 ft radius )					Dominance Test Worksheet	
	Absolute % Cover	Dominant Species	Indicator Status			
1	<i>mockernut hickory (Carya tomentosa (Lam.))</i> 25 %	Yes	N/A	Number of Dominant Species That Are OBL, FACW, or FAC: <u>4</u> (A)		
2	<i>Sweetgum (Liquidambar styraciflua)</i> 20 %	Yes	FAC	Total Number of Dominant Species Across All Strata: <u>9</u> (B)		
3	<i>Southern red oak (Quercus falcata)</i> 15 %	Yes	FACU	Percent of Dominant Species That Are OBL, FACW, or FAC: <u>44.44</u> (A/B)		
4	<i>Eastern redcedar (Juniperus virginiana)</i> 5 %	No	FACU			
5						
6						
65 % = Total Cover						
50% of total cover: <u>32.5</u> % 20% of total cover: <u>13</u> %						
Sapling Stratum      (Plot size: 30 ft radius )					Prevalence Index Worksheet	
	Absolute % Cover	Dominant Species	Indicator Status			
1	<i>Sweetgum (Liquidambar styraciflua)</i> 15 %	Yes	FAC	Total % Cover of:      Multiply by:		
2	<i>mockernut hickory (Carya tomentosa (Lam.))</i> 10 %	Yes	N/A	OBL species	0 x 1 = 0	
3	<i>Tuliptree (Liriodendron tulipifera L.)</i> 10 %	Yes	FACU	FACW species	0 x 2 = 0	
4	<i>Eastern redcedar (Juniperus virginiana)</i> 5 %	No	FACU	FAC species	55 x 3 = 165	
5				FACU species	40 x 4 = 160	
6				UPL species	0 x 5 = 0	
40 % = Total Cover				Column totals	95 (A)   325 (B)	
50% of total cover: <u>20</u> % 20% of total cover: <u>8</u> %				Prevalence Index = B/A = <u>3.421053</u>		
Shrub Stratum      (Plot size: 30 ft radius )					Hydrophytic Vegetation Indicators:	
	Absolute % Cover	Dominant Species	Indicator Status			
1	<i>Sweetgum (Liquidambar styraciflua)</i> 15 %	Yes	FAC	<input type="checkbox"/> - Rapid Test for Hydrophytic Vegetation		
2	<i>Chinese Privet (Ligustrum sinense)</i> 5 %	Yes	FAC	<input type="checkbox"/> 2 - Dominance Test is > 50%		
3	<i>Eastern redcedar (Juniperus virginiana)</i> 5 %	Yes	FACU	<input type="checkbox"/> 3 - Prevalence Index is ≤3.0		
4				<input type="checkbox"/> Problematic Hydrophytic Vegetation (Explain)		
5				Indicators of hydric soil and wetland hydrology must be present, unless disturbed or problematic.		
6						
25 % = Total Cover						
50% of total cover: <u>12.5</u> % 20% of total cover: <u>5</u> %						
Herb Stratum      (Plot size: 30 ft radius )					Definitions of Five Vegetation Strata:	
	Absolute % Cover	Dominant Species	Indicator Status			
1				<b>Tree</b> - Woody plants, excluding woody vines, approximately 20 ft (6m) or more in height and 3 in. (7.6 cm) or larger in diameter at breast height (DBH).  <b>Sapling</b> - Woody plants, excluding woody vines approximately 20 ft (6m) or more in height and less than 3 in. (7.6 cm) DBH.  <b>Shrub</b> - Woody plants, excluding woody vines, approximately 3 to 20 ft (1 to 6 m) in height.  <b>Herb</b> - All herbaceous (non-woody) plants, including herbaceous vines, regardless of size, and woody plants, except woody vines, less than approximately 3ft (1m) in height.  <b>Woody vine</b> - All woody vines, regardless of height.		
2						
3						
4						
5						
6						
7						
8						
9						
10						
11						
0 % = Total Cover						
50% of total cover: <u>0</u> 20% of total cover: <u>0</u>						
Woody Vine Stratum      (Plot size: 30 ft radius )					Hydrophytic Vegetation Present?	
	Absolute % Cover	Dominant Species	Indicator Status			
1				Yes <input type="checkbox"/> No <input checked="" type="checkbox"/>		
2						
3						
4						
5						
0% = Total Cover						
50% of total cover: <u>0</u> 20% of total cover: <u>0</u>						
Remarks: (Include photo numbers here or on a separate sheet).						



## SOIL

Sampling Point: DP-1 UP

[illegible]